



Datasheet for ABIN6746350  
**anti-GABARAPL2 antibody (C-Term)**



[Go to Product page](#)

1 Image

Overview

Quantity:	100 µL
Target:	GABARAPL2
Binding Specificity:	C-Term
Reactivity:	Human, Mouse, Rat, Cow, Dog, Guinea Pig, Horse, Rabbit, Goat, Bat, Chicken, Hamster, Monkey, Pig, Xenopus laevis
Host:	Rabbit
Clonality:	Polyclonal
Conjugate:	This GABARAPL2 antibody is un-conjugated
Application:	Western Blotting (WB)

Product Details

Immunogen: Synthetic peptide from C-Terminus of rat Gabarapl2 (P60522, NP\_073197). Percent identity by BLAST analysis: Human, Chimpanzee, Gorilla, Gibbon, Monkey, Galago, Marmoset, Mouse, Rat, Goat, Hamster, Elephant, Dog, Bovine, Bat, Rabbit, Horse, Pig, Opossum, Guinea pig, Turkey, Zebra finch, Chicken, Platypus, Xenopus, Salmon, Smelt, Stickleback (100%), Zebrafish (92%), Lizard (90%), Trout (85%), Catfish (81%).

Type of Immunogen: Synthetic peptide

Specificity:	Rat GABARAPL2
Predicted Reactivity:	Percent identity by BLAST analysis: Human, Dog, Chicken, Xenopus (100%) Zebrafish (92%).
Purification:	Immunoaffinity purified

## Target Details

---

Target:	GABARAPL2
Alternative Name:	GABARAPL2 / ATG8 ( <a href="#">GABARAPL2 Products</a> )
Background:	Name/Gene ID: GABARAPL2  Synonyms: GABARAPL2, ATG8, ATG8C, GEF2, FLC3A, GATE-16, GATE16, GEF-2
Gene ID:	11345
NCBI Accession:	<a href="#">NP_073197</a>
UniProt:	<a href="#">P60520</a>
Pathways:	<a href="#">Autophagy</a>

## Application Details

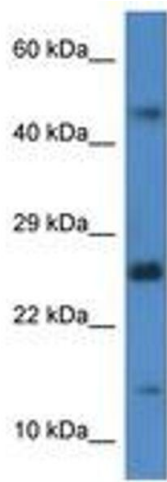
---

Application Notes:	Approved: WB (1 µg/mL)  Usage: Western Blot: Suggested dilution at 1 µg/mL in 5 % skim milk / PBS buffer, and HRP conjugated anti-Rabbit IgG should be diluted in 1: 50,000 - 100,000 as secondary antibody.
Comment:	Target Species of Antibody: Rat
Restrictions:	For Research Use only

## Handling

---

Format:	Lyophilized
Reconstitution:	Distilled water
Concentration:	Lot specific
Buffer:	Lyophilized from PBS with 2 % sucrose
Handling Advice:	Avoid repeat freeze-thaw cycles.
Storage:	4 °C,-20 °C
Storage Comment:	Long term: -20°C, the use of 50% glycerol is recommended if storing aliquots in -20°C for long term use (up to 1 year)  Short term (less than 1 week): 4°C. Avoid freeze-thaw cycles.



**Image 1.**