



[Go to Product page](#)

Datasheet for ABIN6746355
anti-BNIPL antibody (AA 251-300)

1 Image

Overview

Quantity:	100 µL
Target:	BNIPL
Binding Specificity:	AA 251-300
Reactivity:	Human, Mouse, Rat, Rabbit, Cow, Dog, Guinea Pig, Horse, Monkey
Host:	Rabbit
Clonality:	Polyclonal
Conjugate:	This BNIPL antibody is un-conjugated
Application:	Western Blotting (WB)

Product Details

Immunogen:	Synthetic peptide located between aa251-300 of human BNIPL (Q7Z465, NP_612122). Percent identity by BLAST analysis: Human, Chimpanzee, Gorilla, Gibbon, Monkey, Marmoset, Mouse, Rat, Elephant, Panda, Dog, Bovine, Rabbit, Horse, Guinea pig (100%), Galago, Bat, Pig, Opossum (92%). Type of Immunogen: Synthetic peptide
Specificity:	Human BNIPL
Predicted Reactivity:	Percent identity by BLAST analysis: Human, Mouse, Rat, Dog, Bovine, Rabbit, Horse, Guinea pig (100%) Pig (92%).
Purification:	Immunoaffinity purified

Target Details

Target:	BNIPL
Alternative Name:	BNIPL (BNIPL Products)
Background:	Name/Gene ID: BNIPL Synonyms: BNIPL, BNIPL-1, BNIP-2 similar, BNIPL-2, BNIP-S, BNIPL2, BNIPS, BNIPL1, PP753
Gene ID:	149428
NCBI Accession:	NP_612122
UniProt:	Q7Z465

Application Details

Application Notes:	Approved: WB (0.2 - 1 µg/mL) Usage: Western Blot: Suggested dilution at 1 µg/mL in 5 % skim milk / PBS buffer, and HRP conjugated anti-Rabbit IgG should be diluted in 1: 50,000 - 100,000 as secondary antibody.
Comment:	Target Species of Antibody: Human
Restrictions:	For Research Use only

Handling

Format:	Lyophilized
Reconstitution:	Distilled water
Concentration:	Lot specific
Buffer:	Lyophilized from PBS with 2 % sucrose
Handling Advice:	Avoid repeat freeze-thaw cycles.
Storage:	4 °C, -20 °C
Storage Comment:	Long term: -20°C, the use of 50% glycerol is recommended if storing aliquots in -20°C for long term use (up to 1 year) Short term (less than 1 week): 4°C. Avoid freeze-thaw cycles.

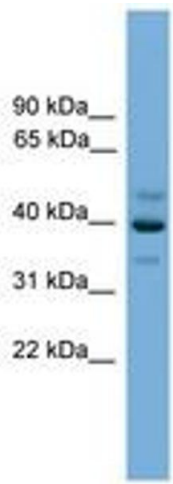


Image 1.