



Datasheet for ABIN6746363 **anti-CISH antibody (AA 78-127)**



[Go to Product page](#)

1 Image

Overview

Quantity:	100 µL
Target:	CISH
Binding Specificity:	AA 78-127
Reactivity:	Human, Mouse, Rat, Pig, Rabbit, Cow, Horse, Dog, Monkey, Bat
Host:	Rabbit
Clonality:	Polyclonal
Conjugate:	This CISH antibody is un-conjugated
Application:	Western Blotting (WB)

Product Details

Immunogen:	Synthetic peptide located between aa78-127 of mouse Cish (Q62225, NP_034025). Percent identity by BLAST analysis: Human, Chimpanzee, Gorilla, Gibbon, Monkey, Galago, Marmoset, Mouse, Rat, Elephant, Panda, Dog, Bovine, Bat, Rabbit, Horse, Pig (100%), Turkey, Zebra finch, Chicken, Platypus (92%), Lizard (85%). Type of Immunogen: Synthetic peptide
Specificity:	Mouse CISH
Predicted Reactivity:	Percent identity by BLAST analysis: Human, Mouse, Rat, Dog, Bovine, Rabbit, Pig (100%) Chicken (92%).
Purification:	Immunoaffinity purified

Target Details

Target:	CISH
Alternative Name:	CISH / SOCS (CISH Products)
Background:	Name/Gene ID: CISH Synonyms: CISH, BACTS2, CIS-1, G18, SOCS, CIS, Protein G18
Gene ID:	1154
NCBI Accession:	NP_034025
UniProt:	Q9NSE2
Pathways:	JAK-STAT Signaling , Response to Growth Hormone Stimulus

Application Details

Application Notes:	Approved: WB (0.2 - 1 µg/mL) Usage: Western Blot: Suggested dilution at 1 µg/mL in 5 % skim milk / PBS buffer, and HRP conjugated anti-Rabbit IgG should be diluted in 1: 50,000 - 100,000 as secondary antibody.
Comment:	Target Species of Antibody: Mouse
Restrictions:	For Research Use only

Handling

Format:	Lyophilized
Reconstitution:	Reconstitute with 50 µL sterile ddH ₂ O.
Concentration:	Lot specific
Buffer:	Lyophilized from PBS with 2 % sucrose
Handling Advice:	Avoid repeat freeze-thaw cycles.
Storage:	4 °C, -20 °C
Storage Comment:	Long term: -20°C, the use of 50% glycerol is recommended if storing aliquots in -20°C for long term use (up to 1 year) Short term (less than 1 week): 4°C. Avoid freeze-thaw cycles.

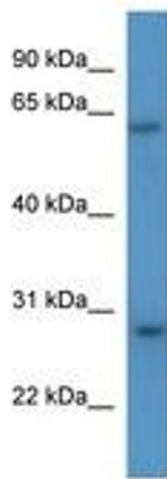


Image 1.