



[Go to Product page](#)

Datasheet for ABIN6746365
anti-TRAF3IP2 antibody (N-Term)

1 Image

Overview

Quantity:	100 µL
Target:	TRAF3IP2
Binding Specificity:	N-Term
Reactivity:	Human, Rat, Pig
Host:	Rabbit
Clonality:	Polyclonal
Conjugate:	This TRAF3IP2 antibody is un-conjugated
Application:	Western Blotting (WB)

Product Details

Immunogen:	Synthetic peptide from N-Terminus of human TRAF3IP2 (O43734). Percent identity by BLAST analysis: Human (100%), Gorilla, Gibbon, Monkey, Mouse, Horse, Guinea pig (92%), Marmoset (91%), Rat, Hamster, Elephant (85%). Type of Immunogen: Synthetic peptide
Specificity:	Human TRAF3IP2 / ACT1
Predicted Reactivity:	Percent identity by BLAST analysis: Human (100%) Mouse, Horse, Guinea pig (92%) Rat (85%).
Purification:	Immunoaffinity purified

Target Details

Target:	TRAF3IP2
---------	----------

Target Details

Alternative Name: TRAF3IP2 / ACT1 ([TRAF3IP2 Products](#))

Background: Name/Gene ID: TRAF3IP2

Synonyms: TRAF3IP2, C6orf2, C6orf4, C6orf5, CIKS, DKFZP586G0522, Connection to IKK and SAPK/JNK, ACT1, Adapter protein CIKS, NFkB-activating protein ACT1, PSORS13, TRAF3-interacting protein 2, C6orf6, TRAF3 interacting protein 2

Gene ID: 10758

UniProt: [O43734](#)

Pathways: [Production of Molecular Mediator of Immune Response](#)

Application Details

Application Notes: Approved: WB (0.2 - 1 µg/mL)

Usage: Western Blot: Suggested dilution at 1 µg/mL in 5 % skim milk / PBS buffer, and HRP conjugated anti-Rabbit IgG should be diluted in 1: 50,000 - 100,000 as secondary antibody.

Comment: Target Species of Antibody: Human

Restrictions: For Research Use only

Handling

Format: Lyophilized

Reconstitution: Distilled water

Concentration: Lot specific

Buffer: Lyophilized from PBS with 2 % sucrose

Handling Advice: Avoid repeat freeze-thaw cycles.

Storage: 4 °C, -20 °C

Storage Comment: Long term: -20°C, the use of 50% glycerol is recommended if storing aliquots in -20°C for long term use (up to 1 year)

Short term (less than 1 week): 4°C. Avoid freeze-thaw cycles.

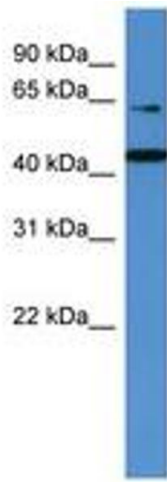


Image 1.