

Datasheet for ABIN6746392

anti-FRG1 antibody (AA 88-137)



[Go to Product page](#)

1 Image

Overview

Quantity:	100 µL
Target:	FRG1
Binding Specificity:	AA 88-137
Reactivity:	Human, Mouse, Rat, Cow, Dog, Horse, Goat, Guinea Pig, Rabbit, Pig
Host:	Rabbit
Clonality:	Polyclonal
Conjugate:	This FRG1 antibody is un-conjugated
Application:	Western Blotting (WB)

Product Details

Immunogen:	Synthetic peptide located between aa88-137 of rat Frg1 (D3ZRG9). Percent identity by BLAST analysis: Human, Gorilla, Galago, Marmoset, Mouse, Rat, Goat, Elephant, Panda, Dog, Bovine, Rabbit, Horse, Pig, Guinea pig, Pufferfish (100%), Monkey, Opossum, Turkey, Zebra finch, Chicken, Platypus, Xenopus, Catfish, Salmon, Smelt, Stickleback (92%), Gibbon (85%). Type of Immunogen: Synthetic peptide
Specificity:	Rat FRG1
Predicted Reactivity:	Percent identity by BLAST analysis: Human, Mouse, Rat, Dog, Bovine, Goat, Guinea pig (100%) Chicken, Xenopus (92%).
Purification:	Immunoaffinity purified

Target Details

Target:	FRG1
Alternative Name:	FRG1 (FRG1 Products)
Background:	Name/Gene ID: FRG1 Synonyms: FRG1, FSHD region gene 1 protein, FRG1A, FSG1, Protein FRG1, FSHD region gene 1
Gene ID:	2483
UniProt:	Q14331

Application Details

Application Notes:	Approved: WB (0.2 - 1 µg/mL) Usage: Western Blot: Suggested dilution at 1 µg/mL in 5 % skim milk / PBS buffer, and HRP conjugated anti-Rabbit IgG should be diluted in 1: 50,000 - 100,000 as secondary antibody.
Comment:	Target Species of Antibody: Rat
Restrictions:	For Research Use only

Handling

Format:	Lyophilized
Reconstitution:	Distilled water
Concentration:	Lot specific
Buffer:	Lyophilized from PBS with 2 % sucrose
Handling Advice:	Avoid repeat freeze-thaw cycles.
Storage:	4 °C,-20 °C
Storage Comment:	Long term: -20°C, the use of 50% glycerol is recommended if storing aliquots in -20°C for long term use (up to 1 year) Short term (less than 1 week): 4°C. Avoid freeze-thaw cycles.

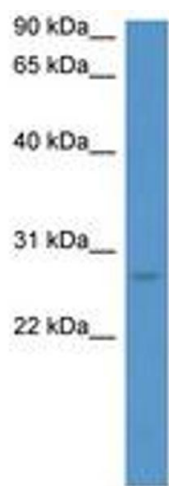


Image 1.