



[Go to Product page](#)

Datasheet for ABIN6746401  
**anti-ZC3H3 antibody (N-Term)**

1 Image

Overview

Quantity:	100 µL
Target:	ZC3H3
Binding Specificity:	N-Term
Reactivity:	Human, Mouse, Guinea Pig, Monkey, Rat
Host:	Rabbit
Clonality:	Polyclonal
Conjugate:	This ZC3H3 antibody is un-conjugated
Application:	Western Blotting (WB)

Product Details

Immunogen:	Synthetic peptide from N-Terminus of mouse Zc3h3 (Q8CHP0, NP_742119). Percent identity by BLAST analysis: Human, Gorilla, Gibbon, Monkey, Marmoset, Mouse, Rat (100%), Galago, Bovine, Opossum (92%), Dog (91%), Horse, Pig (90%), Guinea pig (85%).  Type of Immunogen: Synthetic peptide
Specificity:	Mouse ZC3H3
Predicted Reactivity:	Percent identity by BLAST analysis: Human, Mouse, Rat (100%) Bovine (92%) Dog (91%) Horse, Pig (90%) Guinea pig (85%).
Purification:	Immunoaffinity purified

## Target Details

---

Target:	ZC3H3
Alternative Name:	ZC3H3 ( <a href="#">ZC3H3 Products</a> )
Background:	Name/Gene ID: ZC3H3  Synonyms: ZC3H3, ZC3HDC3, KIAA0150
Gene ID:	23144
NCBI Accession:	<a href="#">NP_742119</a>
UniProt:	<a href="#">Q8IXZ2</a>

## Application Details

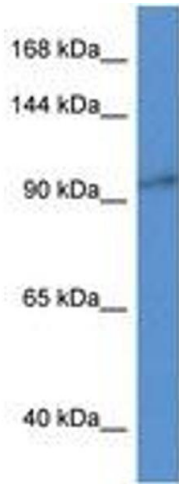
---

Application Notes:	Approved: WB (1 µg/mL)  Usage: Western Blot: Suggested dilution at 1 µg/mL in 5 % skim milk / PBS buffer, and HRP conjugated anti-Rabbit IgG should be diluted in 1: 50,000 - 100,000 as secondary antibody.
Comment:	Target Species of Antibody: Mouse
Restrictions:	For Research Use only

## Handling

---

Format:	Lyophilized
Reconstitution:	Distilled water
Concentration:	Lot specific
Buffer:	Lyophilized from PBS with 2 % sucrose
Handling Advice:	Avoid repeat freeze-thaw cycles.
Storage:	4 °C, -20 °C
Storage Comment:	Long term: -20°C, the use of 50% glycerol is recommended if storing aliquots in -20°C for long term use (up to 1 year)  Short term (less than 1 week): 4°C. Avoid freeze-thaw cycles.



**Image 1.**