



Datasheet for ABIN6746403
anti-ANGEL1 antibody (AA 437-486)



[Go to Product page](#)

1 Image

Overview

Quantity:	100 µL
Target:	ANGEL1
Binding Specificity:	AA 437-486
Reactivity:	Human, Mouse, Rat, Rabbit, Cow, Dog, Guinea Pig, Horse, Bat
Host:	Rabbit
Clonality:	Polyclonal
Conjugate:	This ANGEL1 antibody is un-conjugated
Application:	Western Blotting (WB)

Product Details

Immunogen:	Synthetic peptide located between aa437-486 of mouse Angel1 (Q8VCU0, NP_653107). Percent identity by BLAST analysis: Human, Gorilla, Gibbon, Monkey, Galago, Mouse, Rat, Elephant, Dog, Bovine, Bat, Rabbit, Horse, Opossum, Guinea pig, Platypus (100%), Marmoset (92%), Zebra finch (85%). Type of Immunogen: Synthetic peptide
Specificity:	Mouse ANGEL1
Predicted Reactivity:	Percent identity by BLAST analysis: Human, Dog, Bovine, Rabbit, Horse, Guinea pig (100%).
Purification:	Immunoaffinity purified

Target Details

Target: ANGEL1

Alternative Name: ANGEL1 ([ANGEL1 Products](#))

Background: Name/Gene ID: ANGEL1

Synonyms: ANGEL1, KIAA0759, Angel homolog 1 (Drosophila), Protein angel homolog 1

Gene ID: 23357

NCBI Accession: [NP_653107](#)

UniProt: [Q9UNK9](#)

Application Details

Application Notes: Approved: WB (0.2 - 1 µg/mL)

Usage: Western Blot: Suggested dilution at 1 µg/mL in 5 % skim milk / PBS buffer, and HRP conjugated anti-Rabbit IgG should be diluted in 1: 50,000 - 100,000 as secondary antibody.

Comment: Target Species of Antibody: Mouse

Restrictions: For Research Use only

Handling

Format: Lyophilized

Reconstitution: Distilled water

Concentration: Lot specific

Buffer: Lyophilized from PBS with 2 % sucrose

Handling Advice: Avoid repeat freeze-thaw cycles.

Storage: 4 °C, -20 °C

Storage Comment: Long term: -20°C, the use of 50% glycerol is recommended if storing aliquots in -20°C for long term use (up to 1 year)

Short term (less than 1 week): 4°C. Avoid freeze-thaw cycles.

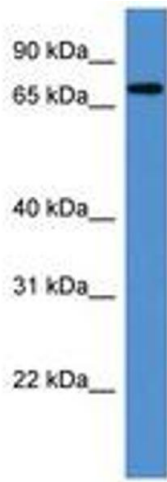


Image 1.