

Datasheet for ABIN6746407
anti-FE65 antibody (AA 197-246)[Go to Product page](#)

1 Image

Overview

Quantity:	100 µL
Target:	FE65 (APBB1)
Binding Specificity:	AA 197-246
Reactivity:	Mouse, Human, Rat, Rabbit, Dog, Cow, Guinea Pig, Bat
Host:	Rabbit
Clonality:	Polyclonal
Conjugate:	This FE65 antibody is un-conjugated
Application:	Western Blotting (WB)

Product Details

Immunogen:	Synthetic peptide located between aa197-246 of mouse Apbb1 (Q9QXJ1, NP_033815). Percent identity by BLAST analysis: Human, Chimpanzee, Gorilla, Galago, Mouse, Rat, Elephant, Panda, Dog, Bovine, Bat, Rabbit, Guinea pig (100%), Horse, Pig, Opossum (92%). Type of Immunogen: Synthetic peptide
Specificity:	Mouse APBB1 / FE65
Predicted Reactivity:	Percent identity by BLAST analysis: Human, Mouse, Rat, Dog, Bovine, Rabbit, Guinea pig (100%) Horse, Pig (92%).
Purification:	Immunoaffinity purified

Target Details

Target:	FE65 (APBB1)
Alternative Name:	APBB1 / FE65 (APBB1 Products)
Background:	Name/Gene ID: APBB1 Synonyms: APBB1, FE65, Adaptor protein FE65a2, Protein Fe65, Stat-like protein, MGC:9072, RIR
Gene ID:	322
NCBI Accession:	NP_033815
UniProt:	O00213
Pathways:	Positive Regulation of Response to DNA Damage Stimulus

Application Details

Application Notes:	Approved: WB (0.2 - 1 µg/mL) Usage: Western Blot: Suggested dilution at 1 µg/mL in 5 % skim milk / PBS buffer, and HRP conjugated anti-Rabbit IgG should be diluted in 1: 50,000 - 100,000 as secondary antibody.
Comment:	Target Species of Antibody: Mouse
Restrictions:	For Research Use only

Handling

Format:	Lyophilized
Reconstitution:	Distilled water
Concentration:	Lot specific
Buffer:	Lyophilized from PBS with 2 % sucrose
Handling Advice:	Avoid repeat freeze-thaw cycles.
Storage:	4 °C,-20 °C
Storage Comment:	Long term: -20°C, the use of 50% glycerol is recommended if storing aliquots in -20°C for long term use (up to 1 year) Short term (less than 1 week): 4°C. Avoid freeze-thaw cycles.

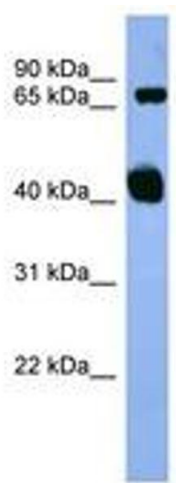


Image 1.