

Datasheet for ABIN6746428
anti-C19ORF45 antibody (AA 215-264)[Go to Product page](#)

1 Image

Overview

Quantity:	100 µL
Target:	C19ORF45
Binding Specificity:	AA 215-264
Reactivity:	Human, Dog, Pig, Rabbit
Host:	Rabbit
Clonality:	Polyclonal
Conjugate:	This C19ORF45 antibody is un-conjugated
Application:	Western Blotting (WB)

Product Details

Immunogen:	Synthetic peptide located between aa215-264 of human C19orf45 (Q8NA69, NP_940936). Percent identity by BLAST analysis: Human (100%), Gibbon (92%), Marmoset, Elephant, Panda, Dog, Pig (85%). Type of Immunogen: Synthetic peptide
Specificity:	Human C19ORF45
Predicted Reactivity:	Percent identity by BLAST analysis: Dog, Pig (85%).
Purification:	Immunoaffinity purified

Target Details

Target:	C19ORF45
---------	----------

Target Details

Alternative Name: C19orf45 ([C19ORF45 Products](#))

Background: Name/Gene ID: C19orf45

Synonyms: C19orf45

Gene ID: 374877

NCBI Accession: [NP_940936](#)

UniProt: [Q8NA69](#)

Application Details

Application Notes: Approved: WB (0.2 - 1 µg/mL)

Usage: Western Blot: Suggested dilution at 1 µg/mL in 5 % skim milk / PBS buffer, and HRP conjugated anti-Rabbit IgG should be diluted in 1: 50,000 - 100,000 as secondary antibody.

Comment: Target Species of Antibody: Human

Restrictions: For Research Use only

Handling

Format: Lyophilized

Reconstitution: Distilled water

Concentration: Lot specific

Buffer: Lyophilized from PBS with 2 % sucrose

Handling Advice: Avoid repeat freeze-thaw cycles.

Storage: 4 °C, -20 °C

Storage Comment: Long term: -20°C, the use of 50% glycerol is recommended if storing aliquots in -20°C for long term use (up to 1 year)
Short term (less than 1 week): 4°C. Avoid freeze-thaw cycles.

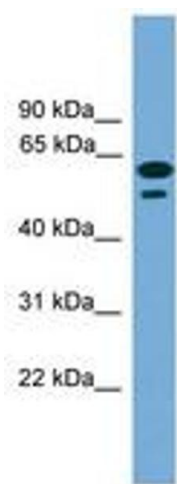


Image 1.