



[Go to Product page](#)

Datasheet for ABIN6746432

anti-ANKRD13D antibody (AA 280-329)

1 Image

Overview

| | |
|----------------------|---|
| Quantity: | 100 µL |
| Target: | ANKRD13D |
| Binding Specificity: | AA 280-329 |
| Reactivity: | Human, Mouse, Rat, Guinea Pig, Horse, Zebrafish (Danio rerio), Monkey, Pig, Bat |
| Host: | Rabbit |
| Clonality: | Polyclonal |
| Conjugate: | This ANKRD13D antibody is un-conjugated |
| Application: | Western Blotting (WB) |

Product Details

| | |
|-----------------------|--|
| Immunogen: | Synthetic peptide located between aa280-329 of mouse Ankrd13d (Q6PD24, NP_080996). Percent identity by BLAST analysis: Human, Gorilla, Gibbon, Monkey, Galago, Marmoset, Mouse, Elephant, Panda, Bat, Horse, Pig, Guinea pig, Turkey, Zebra finch, Stickleback, Zebrafish (100%), Dog, Salmon (92%), Bovine (91%), Rat, Lizard (85%). Type of Immunogen: Synthetic peptide |
| Specificity: | Mouse ANKRD13D |
| Predicted Reactivity: | Percent identity by BLAST analysis: Horse, Guinea pig (100%) Dog (92%) Bovine (91%) Mouse, Rat (85%). |
| Purification: | Immunoaffinity purified |

Target Details

| | |
|-------------------|--|
| Target: | ANKRD13D |
| Alternative Name: | ANKRD13D (ANKRD13D Products) |
| Background: | Name/Gene ID: ANKRD13D Synonyms: ANKRD13D |
| Gene ID: | 338692 |
| NCBI Accession: | NP_080996 |
| UniProt: | Q6ZTN6 |

Application Details

| | |
|--------------------|--|
| Application Notes: | Approved: WB (1 µg/mL) Usage: Western Blot: Suggested dilution at 1 µg/mL in 5 % skim milk / PBS buffer, and HRP conjugated anti-Rabbit IgG should be diluted in 1: 50,000 - 100,000 as secondary antibody. |
| Comment: | Target Species of Antibody: Mouse |
| Restrictions: | For Research Use only |

Handling

| | |
|------------------|---|
| Format: | Lyophilized |
| Reconstitution: | Distilled water |
| Concentration: | Lot specific |
| Buffer: | Lyophilized from PBS with 2 % sucrose |
| Handling Advice: | Avoid repeat freeze-thaw cycles. |
| Storage: | 4 °C, -20 °C |
| Storage Comment: | Long term: -20°C, the use of 50% glycerol is recommended if storing aliquots in -20°C for long term use (up to 1 year) Short term (less than 1 week): 4°C. Avoid freeze-thaw cycles. |

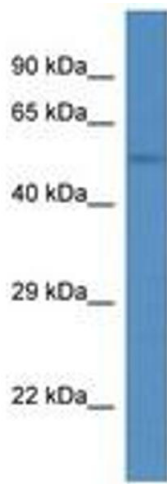


Image 1.