



Datasheet for ABIN6746434  
**anti-ARMC8 antibody (N-Term)**



[Go to Product page](#)

1 Image

Overview

Quantity:	100 µL
Target:	ARMC8
Binding Specificity:	N-Term
Reactivity:	Human, Mouse, Rat, Rabbit, Cow, Dog, Guinea Pig, Horse, Zebrafish (Danio rerio), Bat, Hamster, Xenopus laevis, Monkey
Host:	Rabbit
Clonality:	Polyclonal
Conjugate:	This ARMC8 antibody is un-conjugated
Application:	Western Blotting (WB)

Product Details

Immunogen:	Synthetic peptide from N-Terminus of human ARMC8 (Q8IUR7, NP_998819). Percent identity by BLAST analysis: Human, Chimpanzee, Gorilla, Orangutan, Gibbon, Monkey, Marmoset, Mouse, Rat, Hamster, Elephant, Dog, Bovine, Bat, Rabbit, Horse, Opossum, Guinea pig, Lizard, Xenopus, Stickleback, Zebrafish (100%), Turkey, Zebra finch, Chicken (92%).  Type of Immunogen: Synthetic peptide
Specificity:	Human ARMC8
Predicted Reactivity:	Percent identity by BLAST analysis: Human, Mouse, Rat, Dog, Bovine, Rabbit, Horse, Guinea pig, Xenopus, Zebrafish (100%) Chicken (92%).
Purification:	Immunoaffinity purified

## Target Details

---

Target: ARMC8

Alternative Name: ARMC8 ([ARMC8 Products](#))

Background: Name/Gene ID: ARMC8

Synonyms: ARMC8, DKFZP434A043, HSPC056, GID5, VID28, S863-2, Armadillo repeat containing 8

Gene ID: 25852

NCBI Accession: [NP\\_998819](#)

UniProt: [Q8IUR7](#)

## Application Details

---

Application Notes: Approved: WB (0.2 - 1 µg/mL)

Usage: Western Blot: Suggested dilution at 1 µg/mL in 5 % skim milk / PBS buffer, and HRP conjugated anti-Rabbit IgG should be diluted in 1: 50,000 - 100,000 as secondary antibody.

Comment: Target Species of Antibody: Human

Restrictions: For Research Use only

## Handling

---

Format: Lyophilized

Reconstitution: Distilled water

Concentration: Lot specific

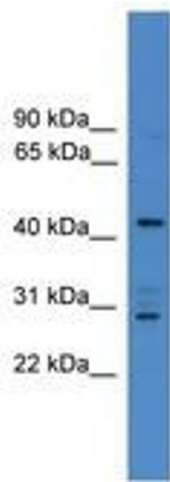
Buffer: Lyophilized from PBS with 2 % sucrose

Handling Advice: Avoid repeat freeze-thaw cycles.

Storage: 4 °C, -20 °C

Storage Comment: Long term: -20°C, the use of 50% glycerol is recommended if storing aliquots in -20°C for long term use (up to 1 year)

Short term (less than 1 week): 4°C. Avoid freeze-thaw cycles.



**Image 1.**