



Datasheet for ABIN6746441
anti-PDE4B antibody (AA 62-111)



[Go to Product page](#)

1 Image

Overview

Quantity:	100 µL
Target:	PDE4B
Binding Specificity:	AA 62-111
Reactivity:	Human, Mouse, Rat, Guinea Pig, Horse, Cow, Dog, Pig, Bat, Monkey, Chicken
Host:	Rabbit
Clonality:	Polyclonal
Conjugate:	This PDE4B antibody is un-conjugated
Application:	Western Blotting (WB)

Product Details

Immunogen:	Synthetic peptide located between aa62-111 of mouse Pde4b (Q9QXI7, NP_062814). Percent identity by BLAST analysis: Human, Gorilla, Gibbon, Monkey, Galago, Marmoset, Mouse, Rat, Elephant, Dog, Bovine, Bat, Horse, Pig, Opossum, Guinea pig, Turkey, Zebra finch, Chicken (100%), Rabbit, Lizard (92%), Xenopus (85%), Platypus (84%), Panda (81%). Type of Immunogen: Synthetic peptide
Specificity:	Mouse PDE4B
Predicted Reactivity:	Percent identity by BLAST analysis: Human, Mouse, Rat, Dog, Bovine, Horse, Pig, Guinea pig, Chicken (100%) Rabbit (92%) Xenopus (85%).
Purification:	Immunoaffinity purified

Target Details

Target:	PDE4B
Alternative Name:	PDE4B (PDE4B Products)
Background:	Name/Gene ID: PDE4B Subfamily: PDE - cAMP-specific Family: Phosphodiesterase Synonyms: PDE4B, Pde-ivb, PDE32, PDE4B5, PDEIVB, Phosphodiesterase 4b, DPDE4, PDE4B3
Gene ID:	5142
NCBI Accession:	NP_062814
UniProt:	Q07343
Pathways:	Cellular Response to Molecule of Bacterial Origin , cAMP Metabolic Process , Myometrial Relaxation and Contraction

Application Details

Application Notes:	Approved: WB (1 µg/mL) Usage: Western Blot: Suggested dilution at 1 µg/mL in 5 % skim milk / PBS buffer, and HRP conjugated anti-Rabbit IgG should be diluted in 1: 50,000 - 100,000 as secondary antibody.
Comment:	Target Species of Antibody: Mouse
Restrictions:	For Research Use only

Handling

Format:	Lyophilized
Reconstitution:	Distilled water
Concentration:	Lot specific
Buffer:	Lyophilized from PBS with 2 % sucrose
Handling Advice:	Avoid repeat freeze-thaw cycles.
Storage:	4 °C,-20 °C
Storage Comment:	Long term: -20°C, the use of 50% glycerol is recommended if storing aliquots in -20°C for long term use (up to 1 year)

Handling

Short term (less than 1 week): 4°C. Avoid freeze-thaw cycles.

Images

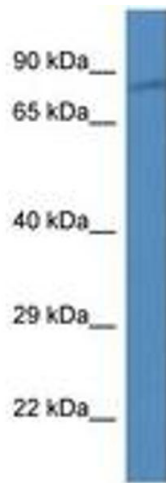


Image 1.