



Datasheet for ABIN6746449
anti-MAPK6 antibody (AA 395-444)



[Go to Product page](#)

1 Image

Overview

Quantity:	100 µL
Target:	MAPK6
Binding Specificity:	AA 395-444
Reactivity:	Human, Mouse, Rat, Cow, Dog, Horse, Pig, Rabbit, Chicken, Guinea Pig, Monkey, Zebrafish (Danio rerio), Hamster, Xenopus laevis, Bat
Host:	Rabbit
Clonality:	Polyclonal
Conjugate:	This MAPK6 antibody is un-conjugated
Application:	Western Blotting (WB)

Product Details

Immunogen:	Synthetic peptide located between aa395-444 of human MAPK6 (Q16659, NP_002739). Percent identity by BLAST analysis: Human, Chimpanzee, Gorilla, Orangutan, Gibbon, Galago, Marmoset, Mouse, Rat, Hamster, Panda, Dog, Bovine, Bat, Rabbit, Horse, Pig, Opossum, Guinea pig, Turkey, Zebra finch, Chicken, Platypus, Xenopus (100%), Elephant (92%), Stickleback (85%). Type of Immunogen: Synthetic peptide
Specificity:	Human MAPK6
Predicted Reactivity:	Percent identity by BLAST analysis: Human, Mouse, Dog, Bovine, Rabbit, Horse, Pig, Chicken (100%).
Purification:	Immunoaffinity purified

Target Details

Target:	MAPK6
Alternative Name:	MAPK6 / ERK3 (MAPK6 Products)
Background:	Name/Gene ID: MAPK6 Subfamily: MAPK Family: Protein Kinase Synonyms: MAPK6, ERK-3, MAP kinase 6, MAPK 6, p97-MAPK, PRKM6, MAP kinase isoform p97, ERK3, HsT17250, p97MAPK
Gene ID:	5597
NCBI Accession:	NP_002739
UniProt:	Q16659
Pathways:	MAPK Signaling , Neurotrophin Signaling Pathway , Regulation of Muscle Cell Differentiation , Hepatitis C

Application Details

Application Notes:	Approved: WB (0.2 - 1 µg/mL) Usage: Western Blot: Suggested dilution at 1 µg/mL in 5 % skim milk / PBS buffer, and HRP conjugated anti-Rabbit IgG should be diluted in 1: 50,000 - 100,000 as secondary antibody.
Comment:	Target Species of Antibody: Human
Restrictions:	For Research Use only

Handling

Format:	Lyophilized
Reconstitution:	Distilled water
Concentration:	Lot specific
Buffer:	Lyophilized from PBS with 2 % sucrose
Handling Advice:	Avoid repeat freeze-thaw cycles.
Storage:	4 °C,-20 °C
Storage Comment:	Long term: -20°C, the use of 50% glycerol is recommended if storing aliquots in -20°C for long

Handling

term use (up to 1 year)

Short term (less than 1 week): 4°C. Avoid freeze-thaw cycles.

Images

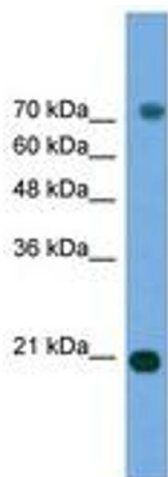


Image 1.