



[Go to Product page](#)

Datasheet for ABIN6746466  
**anti-UBL3 antibody (C-Term)**

1 Image

Overview

Quantity:	100 µL
Target:	UBL3
Binding Specificity:	C-Term
Reactivity:	Human, Rat, Mouse, Horse, Cow, Rabbit, Guinea Pig, Zebrafish (Danio rerio), Dog, Pig, Xenopus laevis, Hamster, Monkey, Bat, Chicken
Host:	Rabbit
Clonality:	Polyclonal
Conjugate:	This UBL3 antibody is un-conjugated
Application:	Western Blotting (WB)

Product Details

Immunogen:	Synthetic peptide from C-Terminus of rat Ubl3 (Q5BJT2, NP_001015030). Percent identity by BLAST analysis: Human, Chimpanzee, Gorilla, Gibbon, Monkey, Galago, Marmoset, Mouse, Rat, Hamster, Elephant, Dog, Bovine, Bat, Rabbit, Horse, Pig, Opossum, Guinea pig, Turkey, Chicken, Platypus, Lizard, Xenopus, Stickleback, Zebrafish (100%), Salmon (85%).  Type of Immunogen: Synthetic peptide
Specificity:	Rat UBL3
Predicted Reactivity:	Percent identity by BLAST analysis: Human, Mouse, Rat, Dog, Bovine, Rabbit, Horse, Pig, Guinea pig, Chicken, Xenopus (100%) Zebrafish (85%).
Purification:	Immunoaffinity purified

## Target Details

---

Target:	UBL3
Alternative Name:	UBL3 ( <a href="#">UBL3 Products</a> )
Background:	Name/Gene ID: UBL3  Synonyms: UBL3, DKFZP434K151, MUB, HsMUB, Protein HCG-1, Ubiquitin-like 3, HCG-1, PNSC1, Ubiquitin-like protein 3
Gene ID:	5412
NCBI Accession:	<a href="#">NP_001015030</a>
UniProt:	<a href="#">O95164</a>

## Application Details

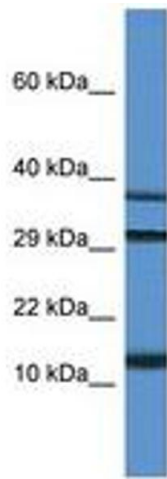
---

Application Notes:	Approved: WB (1 µg/mL)  Usage: Western Blot: Suggested dilution at 1 µg/mL in 5 % skim milk / PBS buffer, and HRP conjugated anti-Rabbit IgG should be diluted in 1: 50,000 - 100,000 as secondary antibody.
Comment:	Target Species of Antibody: Rat
Restrictions:	For Research Use only

## Handling

---

Format:	Lyophilized
Reconstitution:	Distilled water
Concentration:	Lot specific
Buffer:	Lyophilized from PBS with 2 % sucrose
Handling Advice:	Avoid repeat freeze-thaw cycles.
Storage:	4 °C, -20 °C
Storage Comment:	Long term: -20°C, the use of 50% glycerol is recommended if storing aliquots in -20°C for long term use (up to 1 year)  Short term (less than 1 week): 4°C. Avoid freeze-thaw cycles.



**Image 1.**