



[Go to Product page](#)

Datasheet for ABIN6746469
anti-PRR5 antibody (AA 35-84)

1 Image

Overview

Quantity:	100 µL
Target:	PRR5
Binding Specificity:	AA 35-84
Reactivity:	Human, Horse, Cow, Dog, Rabbit, Pig, Monkey
Host:	Rabbit
Clonality:	Polyclonal
Conjugate:	This PRR5 antibody is un-conjugated
Application:	Western Blotting (WB)

Product Details

Immunogen:	Synthetic peptide located between aa35-84 of human PRR5 (B3KRM4, NP_056181). Percent identity by BLAST analysis: Human, Chimpanzee, Gorilla, Gibbon, Monkey, Galago, Elephant, Dog, Bovine, Rabbit, Horse, Pig (100%), Mouse, Rat, Panda (92%). Type of Immunogen: Synthetic peptide
Specificity:	Human PRR5
Predicted Reactivity:	Percent identity by BLAST analysis: Human, Dog, Bovine, Rabbit, Horse (100%) Mouse, Rat (92%).
Purification:	Immunoaffinity purified

Target Details

Target:	PRR5
Alternative Name:	PRR5 (PRR5 Products)
Background:	Name/Gene ID: PRR5 Synonyms: PRR5, Proline-rich protein 5, PROTOR-1, PROTOR1, Protein observed with Rictor-1, Proline rich 5 (renal), PP610
Gene ID:	55615
NCBI Accession:	NP_056181
UniProt:	P85299
Pathways:	PI3K-Akt Signaling

Application Details

Application Notes:	Approved: WB (0.2 - 1 µg/mL) Usage: Western Blot: Suggested dilution at 1 µg/mL in 5 % skim milk / PBS buffer, and HRP conjugated anti-Rabbit IgG should be diluted in 1: 50,000 - 100,000 as secondary antibody.
Comment:	Target Species of Antibody: Human
Restrictions:	For Research Use only

Handling

Format:	Lyophilized
Reconstitution:	Distilled water
Concentration:	Lot specific
Buffer:	Lyophilized from PBS with 2 % sucrose
Handling Advice:	Avoid repeat freeze-thaw cycles.
Storage:	4 °C,-20 °C
Storage Comment:	Long term: -20°C, the use of 50% glycerol is recommended if storing aliquots in -20°C for long term use (up to 1 year) Short term (less than 1 week): 4°C. Avoid freeze-thaw cycles.

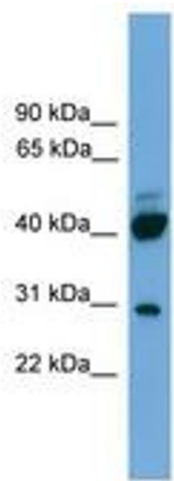


Image 1.