



[Go to Product page](#)

Datasheet for ABIN6746470
anti-LAP3 antibody (AA 133-182)

1 Image

Overview

Quantity:	100 µL
Target:	LAP3
Binding Specificity:	AA 133-182
Reactivity:	Human, Mouse, Rat, Rabbit, Dog, Horse, Zebrafish (Danio rerio), Monkey
Host:	Rabbit
Clonality:	Polyclonal
Conjugate:	This LAP3 antibody is un-conjugated
Application:	Western Blotting (WB)

Product Details

Immunogen:	Synthetic peptide located between aa133-182 of mouse Lap3 (Q9CPY7, NP_077754). Percent identity by BLAST analysis: Human, Chimpanzee, Gorilla, Gibbon, Monkey, Galago, Marmoset, Mouse, Rat, Panda, Dog, Rabbit, Horse (100%), Elephant, Bovine, Platypus (92%), Opossum, Guinea pig, Lizard (85%). Type of Immunogen: Synthetic peptide
Specificity:	Mouse LAP3
Predicted Reactivity:	Percent identity by BLAST analysis: Dog, Rabbit, Horse (100%).
Purification:	Immunoaffinity purified

Target Details

Target:	LAP3
Alternative Name:	LAP3 (LAP3 Products)
Background:	Name/Gene ID: LAP3 Subfamily: Metallopeptidase M17 Family: Exopeptidase Synonyms: LAP3, Cytosol aminopeptidase, LAP, LAPEP, Leucine aminopeptidase 3, Prolyl aminopeptidase, Proline aminopeptidase, LAP-3, Leucyl aminopeptidase, Peptidase S, PEPS
Gene ID:	51056
NCBI Accession:	NP_077754
UniProt:	P28838

Application Details

Application Notes:	Approved: WB (1 µg/mL) Usage: Western Blot: Suggested dilution at 1 µg/mL in 5 % skim milk / PBS buffer, and HRP conjugated anti-Rabbit IgG should be diluted in 1: 50,000 - 100,000 as secondary antibody.
Comment:	Target Species of Antibody: Mouse
Restrictions:	For Research Use only

Handling

Format:	Lyophilized
Reconstitution:	Distilled water
Concentration:	Lot specific
Buffer:	Lyophilized from PBS with 2 % sucrose
Handling Advice:	Avoid repeat freeze-thaw cycles.
Storage:	4 °C, -20 °C
Storage Comment:	Long term: -20°C, the use of 50% glycerol is recommended if storing aliquots in -20°C for long term use (up to 1 year) Short term (less than 1 week): 4°C. Avoid freeze-thaw cycles.

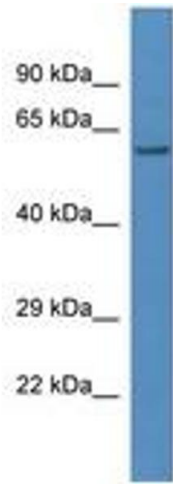


Image 1.