

Datasheet for ABIN6746472
anti-ASCC1 antibody (AA 261-310)[Go to Product page](#)

1 Image

Overview

Quantity:	100 µL
Target:	ASCC1
Binding Specificity:	AA 261-310
Reactivity:	Human, Mouse, Rat, Cow, Dog, Goat, Horse, Monkey
Host:	Rabbit
Clonality:	Polyclonal
Conjugate:	This ASCC1 antibody is un-conjugated
Application:	Western Blotting (WB)

Product Details

Immunogen:	Synthetic peptide located between aa261-310 of rat Ascc1 (NP_001007633). Percent identity by BLAST analysis: Human, Gorilla, Gibbon, Monkey, Galago, Marmoset, Mouse, Rat, Panda, Dog, Bovine, Horse (100%), Elephant, Rabbit, Guinea pig (92%), Goat, Bat (85%). Type of Immunogen: Synthetic peptide
Specificity:	Rat ASCC1
Predicted Reactivity:	Percent identity by BLAST analysis: Human, Mouse, Rat, Dog, Bovine (100%) Rabbit, Guinea pig (92%) Goat (85%).
Purification:	Immunoaffinity purified

Target Details

Target:	ASCC1
Alternative Name:	ASCC1 (ASCC1 Products)
Background:	Name/Gene ID: ASCC1 Synonyms: ASCC1, ASC1p50, ASC-1 complex subunit p50, p50, CGI-18, Em:AC022392.3, Trip4 complex subunit p50
Gene ID:	51008
NCBI Accession:	NP_001007633
UniProt:	Q8N9N2

Application Details

Application Notes:	Approved: WB (0.2 - 1 µg/mL) Usage: Western Blot: Suggested dilution at 1 µg/mL in 5 % skim milk / PBS buffer, and HRP conjugated anti-Rabbit IgG should be diluted in 1: 50,000 - 100,000 as secondary antibody.
Comment:	Target Species of Antibody: Rat
Restrictions:	For Research Use only

Handling

Format:	Lyophilized
Reconstitution:	Distilled water
Concentration:	Lot specific
Buffer:	Lyophilized from PBS with 2 % sucrose
Handling Advice:	Avoid repeat freeze-thaw cycles.
Storage:	4 °C, -20 °C
Storage Comment:	Long term: -20°C, the use of 50% glycerol is recommended if storing aliquots in -20°C for long term use (up to 1 year) Short term (less than 1 week): 4°C. Avoid freeze-thaw cycles.

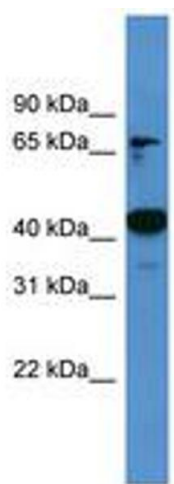


Image 1.