



Datasheet for ABIN6746481 **anti-PRR16 antibody (AA 42-91)**



[Go to Product page](#)

1 Image

Overview

Quantity:	100 µL
Target:	PRR16
Binding Specificity:	AA 42-91
Reactivity:	Human, Mouse, Rat, Cow, Dog, Horse, Pig, Guinea Pig, Rabbit, Monkey, Bat
Host:	Rabbit
Clonality:	Polyclonal
Conjugate:	This PRR16 antibody is un-conjugated
Application:	Western Blotting (WB)

Product Details

Immunogen:	Synthetic peptide located between aa42-91 of mouse Prr16 (A3KMN5, NP_001074693). Percent identity by BLAST analysis: Human, Gorilla, Gibbon, Galago, Marmoset, Mouse, Rat, Elephant, Dog, Bovine, Bat, Rabbit, Horse, Pig, Guinea pig, Platypus (100%), Zebra finch (92%). Type of Immunogen: Synthetic peptide
Specificity:	Mouse PRR16
Predicted Reactivity:	Percent identity by BLAST analysis: Human, Mouse, Rat, Dog, Bovine, Horse, Pig, Guinea pig (100%).
Purification:	Immunoaffinity purified

Target Details

Target: PRR16

Alternative Name: PRR16 ([PRR16 Products](#))

Background: Name/Gene ID: PRR16

Synonyms: PRR16, DSC54, Proline rich 16, Proline-rich protein 16

Gene ID: 51334

NCBI Accession: [NP_001074693](#)

UniProt: [Q569H4](#)

Application Details

Application Notes: Approved: WB (1 µg/mL)

Usage: Western Blot: Suggested dilution at 1 µg/mL in 5 % skim milk / PBS buffer, and HRP conjugated anti-Rabbit IgG should be diluted in 1: 50,000 - 100,000 as secondary antibody.

Comment: Target Species of Antibody: Mouse

Restrictions: For Research Use only

Handling

Format: Lyophilized

Reconstitution: Distilled water

Concentration: Lot specific

Buffer: Lyophilized from PBS with 2 % sucrose

Handling Advice: Avoid repeat freeze-thaw cycles.

Storage: 4 °C, -20 °C

Storage Comment: Long term: -20°C, the use of 50% glycerol is recommended if storing aliquots in -20°C for long term use (up to 1 year)

Short term (less than 1 week): 4°C. Avoid freeze-thaw cycles.

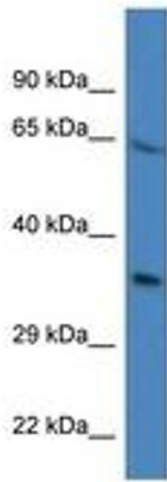


Image 1.