

Datasheet for ABIN6746482
anti-SHC3 antibody (AA 85-134)[Go to Product page](#)

1 Image

Overview

Quantity:	100 µL
Target:	SHC3
Binding Specificity:	AA 85-134
Reactivity:	Human, Mouse, Rat, Cow, Rabbit, Dog, Guinea Pig, Horse, Monkey, Pig
Host:	Rabbit
Clonality:	Polyclonal
Conjugate:	This SHC3 antibody is un-conjugated
Application:	Western Blotting (WB)

Product Details

Immunogen:	Synthetic peptide located between aa85-134 of mouse Shc3 (Q61120, NP_033193). Percent identity by BLAST analysis: Human, Chimpanzee, Gorilla, Gibbon, Monkey, Galago, Marmoset, Mouse, Rat, Dog, Bovine, Rabbit, Horse, Pig, Guinea pig (100%), Elephant, Bat (92%), Lizard (85%). Type of Immunogen: Synthetic peptide
Specificity:	Mouse SHC3
Predicted Reactivity:	Percent identity by BLAST analysis: Human, Mouse, Rat, Dog, Bovine, Rabbit, Horse, Pig, Guinea pig (100%).
Purification:	Immunoaffinity purified

Target Details

Target:	SHC3
Alternative Name:	SHC3 / SHCC (SHC3 Products)
Background:	Name/Gene ID: SHC3 Synonyms: SHC3, Neuronal Shc, NSHC, RAI, SH2 domain protein C3, SHC-transforming protein C, N-Shc, p52 and p64 isoforms of n-shc, Protein Rai, SHC-transforming protein 3, SHCC
Gene ID:	53358
NCBI Accession:	NP_033193
UniProt:	Q92529
Pathways:	RTK Signaling , EGFR Signaling Pathway , Neurotrophin Signaling Pathway

Application Details

Application Notes:	Approved: WB (1 µg/mL) Usage: Western Blot: Suggested dilution at 1 µg/mL in 5 % skim milk / PBS buffer, and HRP conjugated anti-Rabbit IgG should be diluted in 1: 50,000 - 100,000 as secondary antibody.
Comment:	Target Species of Antibody: Mouse
Restrictions:	For Research Use only

Handling

Format:	Lyophilized
Reconstitution:	Distilled water
Concentration:	Lot specific
Buffer:	Lyophilized from PBS with 2 % sucrose
Handling Advice:	Avoid repeat freeze-thaw cycles.
Storage:	4 °C,-20 °C
Storage Comment:	Long term: -20°C, the use of 50% glycerol is recommended if storing aliquots in -20°C for long term use (up to 1 year) Short term (less than 1 week): 4°C. Avoid freeze-thaw cycles.

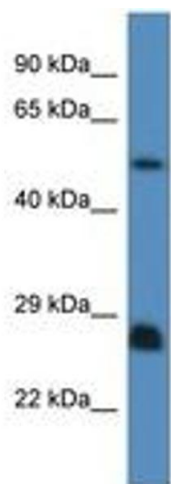


Image 1.