

Datasheet for ABIN6746484
anti-PNRC2 antibody (N-Term)



[Go to Product page](#)

1 Image

Overview

Quantity:	100 µL
Target:	PNRC2
Binding Specificity:	N-Term
Reactivity:	Human, Rat, Rabbit, Horse, Monkey
Host:	Rabbit
Clonality:	Polyclonal
Conjugate:	This PNRC2 antibody is un-conjugated
Application:	Western Blotting (WB)

Product Details

Immunogen:	Synthetic peptide from N-Terminus of rat Pnrc2 (Q66HE1, NP_001096830). Percent identity by BLAST analysis: Human, Gorilla, Gibbon, Monkey, Marmoset, Rat, Panda, Rabbit, Horse (100%), Mouse, Bovine, Guinea pig, Zebra finch (92%), Elephant, Chicken (85%). Type of Immunogen: Synthetic peptide
Specificity:	Rat PNRC2
Predicted Reactivity:	Percent identity by BLAST analysis: Human (100%) Mouse, Rat, Bovine (92%) Chicken (85%).
Purification:	Immunoaffinity purified

Target Details

Target:	PNRC2
---------	-------

Target Details

Alternative Name: [PNRC2 \(PNRC2 Products\)](#)

Background: Name/Gene ID: PNRC2

Synonyms: PNRC2

Gene ID: 55629

NCBI Accession: [NP_001096830](#)

UniProt: [Q9NPJ4](#)

Application Details

Application Notes: Approved: WB (1 µg/mL)

Usage: Western Blot: Suggested dilution at 1 µg/mL in 5 % skim milk / PBS buffer, and HRP conjugated anti-Rabbit IgG should be diluted in 1: 50,000 - 100,000 as secondary antibody.

Comment: Target Species of Antibody: Rat

Restrictions: For Research Use only

Handling

Format: Lyophilized

Reconstitution: Distilled water

Concentration: Lot specific

Buffer: Lyophilized from PBS with 2 % sucrose

Handling Advice: Avoid repeat freeze-thaw cycles.

Storage: 4 °C, -20 °C

Storage Comment: Long term: -20°C, the use of 50% glycerol is recommended if storing aliquots in -20°C for long term use (up to 1 year)

Short term (less than 1 week): 4°C. Avoid freeze-thaw cycles.

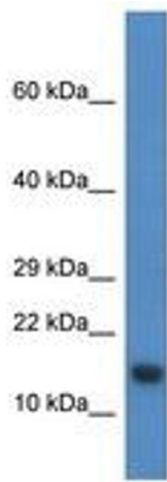


Image 1.