



[Go to Product page](#)

Datasheet for ABIN6746492
anti-OGDHL antibody (AA 26-75)

1 Image

Overview

Quantity:	100 µL
Target:	OGDHL
Binding Specificity:	AA 26-75
Reactivity:	Human, Dog, Pig
Host:	Rabbit
Clonality:	Polyclonal
Conjugate:	This OGDHL antibody is un-conjugated
Application:	Western Blotting (WB)

Product Details

Immunogen:	Synthetic peptide located between aa26-75 of human OGDHL (Q9ULD0, NP_060715). Percent identity by BLAST analysis: Human, Gorilla, Panda, Dog, Pig (100%), Monkey, Galago, Marmoset, Horse (92%), Orangutan (85%). Type of Immunogen: Synthetic peptide
Specificity:	Human OGDHL
Predicted Reactivity:	Percent identity by BLAST analysis: Human, Dog, Pig (100%) Horse (92%).
Purification:	Immunoaffinity purified

Target Details

Target:	OGDHL
---------	-------

Target Details

Alternative Name:	OGDHL (OGDHL Products)
Background:	Name/Gene ID: OGDHL Synonyms: OGDHL, KIAA1290, OGDC-E1-like
Gene ID:	55753
NCBI Accession:	NP_060715
UniProt:	Q9ULD0

Application Details

Application Notes:	Approved: WB (0.2 - 1 µg/mL) Usage: Western Blot: Suggested dilution at 1 µg/mL in 5 % skim milk / PBS buffer, and HRP conjugated anti-Rabbit IgG should be diluted in 1: 50,000 - 100,000 as secondary antibody.
Comment:	Target Species of Antibody: Human
Restrictions:	For Research Use only

Handling

Format:	Lyophilized
Reconstitution:	Distilled water
Concentration:	Lot specific
Buffer:	Lyophilized from PBS with 2 % sucrose
Handling Advice:	Avoid repeat freeze-thaw cycles.
Storage:	4 °C,-20 °C
Storage Comment:	Long term: -20°C, the use of 50% glycerol is recommended if storing aliquots in -20°C for long term use (up to 1 year) Short term (less than 1 week): 4°C. Avoid freeze-thaw cycles.

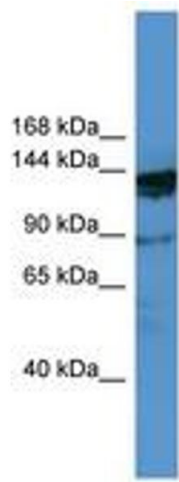


Image 1.