



Datasheet for ABIN6746493  
**anti-TBC1D19 antibody (AA 151-200)**



[Go to Product page](#)

1 Image

Overview

Quantity:	100 µL
Target:	TBC1D19
Binding Specificity:	AA 151-200
Reactivity:	Human, Mouse, Rat, Dog, Guinea Pig, Monkey
Host:	Rabbit
Clonality:	Polyclonal
Conjugate:	This TBC1D19 antibody is un-conjugated
Application:	Western Blotting (WB)

Product Details

Immunogen:	Synthetic peptide located between aa151-200 of human TBC1D19 (Q8N5T2, NP_060787). Percent identity by BLAST analysis: Human, Chimpanzee, Gorilla, Gibbon, Monkey, Galago, Marmoset, Mouse, Rat, Elephant, Panda, Dog, Guinea pig (100%), Bovine, Bat, Rabbit, Horse (92%), Platypus (85%).  Type of Immunogen: Synthetic peptide
Specificity:	Human TBC1D19
Predicted Reactivity:	Percent identity by BLAST analysis: Human, Mouse, Rat, Dog, Guinea pig (100%) Bovine, Horse (92%).
Purification:	Immunoaffinity purified

## Target Details

---

Target:	TBC1D19
Alternative Name:	TBC1D19 ( <a href="#">TBC1D19 Products</a> )
Background:	Name/Gene ID: TBC1D19  Synonyms: TBC1D19, TBC1 domain family member 19, TBC1 domain family, member 19
Gene ID:	55296
NCBI Accession:	<a href="#">NP_060787</a>
UniProt:	<a href="#">Q8N5T2</a>

## Application Details

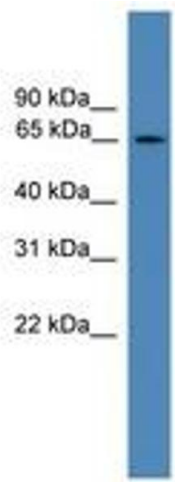
---

Application Notes:	Approved: WB (0.2 - 1 µg/mL)  Usage: Western Blot: Suggested dilution at 1 µg/mL in 5 % skim milk / PBS buffer, and HRP conjugated anti-Rabbit IgG should be diluted in 1: 50,000 - 100,000 as secondary antibody.
Comment:	Target Species of Antibody: Human
Restrictions:	For Research Use only

## Handling

---

Format:	Lyophilized
Reconstitution:	Distilled water
Concentration:	Lot specific
Buffer:	Lyophilized from PBS with 2 % sucrose
Handling Advice:	Avoid repeat freeze-thaw cycles.
Storage:	4 °C, -20 °C
Storage Comment:	Long term: -20°C, the use of 50% glycerol is recommended if storing aliquots in -20°C for long term use (up to 1 year)  Short term (less than 1 week): 4°C. Avoid freeze-thaw cycles.



**Image 1.**