



[Go to Product page](#)

Datasheet for ABIN6746495  
**anti-BRIX1 antibody (AA 215-264)**

1 Image

Overview

Quantity:	100 µL
Target:	BRIX1
Binding Specificity:	AA 215-264
Reactivity:	Human, Mouse, Rat, Cow, Horse, Rabbit, Hamster, Monkey, Pig, Bat, Chicken, Xenopus laevis
Host:	Rabbit
Clonality:	Polyclonal
Conjugate:	This BRIX1 antibody is un-conjugated
Application:	Western Blotting (WB)

Product Details

Immunogen:	Synthetic peptide located between aa215-264 of human BRIX1 (Q8TDN6, NP_060791). Percent identity by BLAST analysis: Human, Chimpanzee, Gorilla, Orangutan, Gibbon, Monkey, Galago, Marmoset, Mouse, Rat, Hamster, Elephant, Panda, Bovine, Bat, Rabbit, Horse, Pig, Opossum, Chicken, Xenopus (100%), Dog, Turkey, Platypus, Catfish, Zebrafish (92%), Smelt, Rice, Grape (85%).  Type of Immunogen: Synthetic peptide
Specificity:	Human BRIX1 / BXDC2
Predicted Reactivity:	Percent identity by BLAST analysis: Human, Chicken (100%) Zebrafish (92%).
Purification:	Immunoaffinity purified

## Target Details

---

Target:	BRIX1
Alternative Name:	BRIX1 ( <a href="#">BRIX1 Products</a> )
Background:	Name/Gene ID: BRIX1  Synonyms: BRIX1, Brix domain containing 2, BRIX, BXDC2
Gene ID:	55299
NCBI Accession:	<a href="#">NP_060791</a>
UniProt:	<a href="#">Q8TDN6</a>

## Application Details

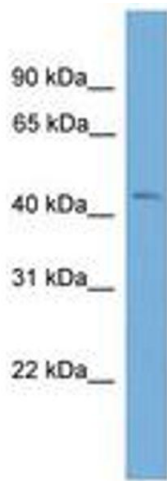
---

Application Notes:	Approved: WB (0.2 - 1 µg/mL)  Usage: Western Blot: Suggested dilution at 1 µg/mL in 5 % skim milk / PBS buffer, and HRP conjugated anti-Rabbit IgG should be diluted in 1: 50,000 - 100,000 as secondary antibody.
Comment:	Target Species of Antibody: Human
Restrictions:	For Research Use only

## Handling

---

Format:	Lyophilized
Reconstitution:	Distilled water
Concentration:	Lot specific
Buffer:	Lyophilized from PBS with 2 % sucrose
Handling Advice:	Avoid repeat freeze-thaw cycles.
Storage:	4 °C, -20 °C
Storage Comment:	Long term: -20°C, the use of 50% glycerol is recommended if storing aliquots in -20°C for long term use (up to 1 year)  Short term (less than 1 week): 4°C. Avoid freeze-thaw cycles.



**Image 1.**