



[Go to Product page](#)

Datasheet for ABIN6746501
anti-TUBA8 antibody (AA 32-81)

1 Image

Overview

Quantity:	100 µL
Target:	TUBA8
Binding Specificity:	AA 32-81
Reactivity:	Human, Rat, Mouse, Dog, Rabbit, Guinea Pig, Monkey, Bat
Host:	Rabbit
Clonality:	Polyclonal
Conjugate:	This TUBA8 antibody is un-conjugated
Application:	Western Blotting (WB)

Product Details

Immunogen:	Synthetic peptide located between aa32-81 of mouse Tuba8 (Q9JJZ2, NP_059075). Percent identity by BLAST analysis: Human, Gorilla, Gibbon, Monkey, Galago, Marmoset, Mouse, Rat, Bat, Rabbit (100%), Hamster, Elephant, Bovine, Horse, Opossum (92%), Dog, Pig, Guinea pig (85%). Type of Immunogen: Synthetic peptide
Specificity:	Mouse TUBA8
Predicted Reactivity:	Percent identity by BLAST analysis: Human, Rabbit (100%) Horse (92%) Dog, Guinea pig (85%).
Purification:	Immunoaffinity purified

Target Details

Target:	TUBA8
Alternative Name:	TUBA8 (TUBA8 Products)
Background:	Name/Gene ID: TUBA8 Synonyms: TUBA8, Alpha-tubulin 8, Tubulin, alpha 8, TUBAL2, Tubulin alpha-8 chain, Tubulin alpha chain-like 2
Gene ID:	51807
NCBI Accession:	NP_059075
UniProt:	Q9NY65
Pathways:	Microtubule Dynamics

Application Details

Application Notes:	Approved: WB (1 µg/mL) Usage: Western Blot: Suggested dilution at 1 µg/mL in 5 % skim milk / PBS buffer, and HRP conjugated anti-Rabbit IgG should be diluted in 1: 50,000 - 100,000 as secondary antibody.
Comment:	Target Species of Antibody: Mouse
Restrictions:	For Research Use only

Handling

Format:	Lyophilized
Reconstitution:	Distilled water
Concentration:	Lot specific
Buffer:	Lyophilized from PBS with 2 % sucrose
Handling Advice:	Avoid repeat freeze-thaw cycles.
Storage:	4 °C,-20 °C
Storage Comment:	Long term: -20°C, the use of 50% glycerol is recommended if storing aliquots in -20°C for long term use (up to 1 year) Short term (less than 1 week): 4°C. Avoid freeze-thaw cycles.

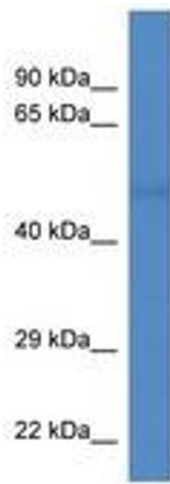


Image 1.