

Datasheet for ABIN6746504

anti-Amyloid beta (A4) Precursor Protein-Binding, Family B, Member 1 Interacting Protein (APBB1IP) (AA 38-87) antibody



[Go to Product page](#)

1 Image

Overview

| | |
|----------------------|---|
| Quantity: | 100 µL |
| Target: | Amyloid beta (A4) Precursor Protein-Binding, Family B, Member 1 Interacting Protein (APBB1IP) |
| Binding Specificity: | AA 38-87 |
| Reactivity: | Human, Mouse, Rat, Cow, Rabbit, Dog, Guinea Pig, Horse, Zebrafish (Danio rerio), Bat |
| Host: | Rabbit |
| Clonality: | Polyclonal |
| Conjugate: | Un-conjugated |
| Application: | Western Blotting (WB) |

Product Details

| | |
|-----------------------|--|
| Immunogen: | Synthetic peptide located between aa38-87 of rat Apbb1ip (NP_001094047). Percent identity by BLAST analysis: Human, Gorilla, Gibbon, Galago, Marmoset, Mouse, Rat, Panda, Dog, Bovine, Bat, Rabbit, Horse, Guinea pig (100%), Monkey, Opossum, Turkey, Zebra finch, Chicken, Platypus, Lizard, Xenopus (92%), Zebrafish (85%). Type of Immunogen: Synthetic peptide |
| Specificity: | Rat APBB1IP / RIAM |
| Predicted Reactivity: | Percent identity by BLAST analysis: Human, Mouse, Rat, Dog, Bovine, Rabbit, Horse, Guinea pig (100%) Chicken (92%) Zebrafish (85%). |
| Purification: | Immunoaffinity purified |

Target Details

| | |
|-------------------|---|
| Target: | Amyloid beta (A4) Precursor Protein-Binding, Family B, Member 1 Interacting Protein (APBB1IP) |
| Alternative Name: | APBB1IP / RIAM (APBB1IP Products) |
| Background: | Name/Gene ID: APBB1IP Synonyms: APBB1IP, APBB1-interacting protein 1, INAG1, PREL-1, Proline-rich protein 73, Proline-rich EVH1 ligand 1, RARP1, RARP-1, RIAM, PREL1, Proline rich EVH1 ligand 1 |
| Gene ID: | 54518 |
| NCBI Accession: | NP_001094047 |
| UniProt: | Q7Z5R6 |

Application Details

| | |
|--------------------|--|
| Application Notes: | Approved: WB (0.2 - 1 µg/mL) Usage: Western Blot: Suggested dilution at 1 µg/mL in 5 % skim milk / PBS buffer, and HRP conjugated anti-Rabbit IgG should be diluted in 1: 50,000 - 100,000 as secondary antibody. |
| Comment: | Target Species of Antibody: Rat |
| Restrictions: | For Research Use only |

Handling

| | |
|------------------|---|
| Format: | Lyophilized |
| Reconstitution: | Distilled water |
| Concentration: | Lot specific |
| Buffer: | Lyophilized from PBS with 2 % sucrose |
| Handling Advice: | Avoid repeat freeze-thaw cycles. |
| Storage: | 4 °C, -20 °C |
| Storage Comment: | Long term: -20°C, the use of 50% glycerol is recommended if storing aliquots in -20°C for long term use (up to 1 year) Short term (less than 1 week): 4°C. Avoid freeze-thaw cycles. |

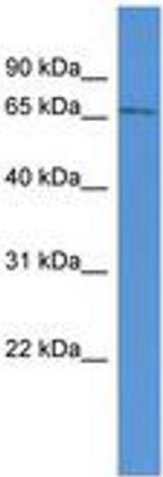


Image 1.