



Datasheet for ABIN6746525 **anti-PKIB antibody (AA 40-89)**



[Go to Product page](#)

1 Image

Overview

Quantity:	100 µL
Target:	PKIB
Binding Specificity:	AA 40-89
Reactivity:	Human, Rat, Mouse, Cow, Dog, Horse, Rabbit
Host:	Rabbit
Clonality:	Polyclonal
Conjugate:	This PKIB antibody is un-conjugated
Application:	Western Blotting (WB)

Product Details

Immunogen:	Synthetic peptide located between aa40-89 of rat Pkib (Q8R4R3, NP_001070021). Percent identity by BLAST analysis: Human, Gorilla, Gibbon, Marmoset, Mouse, Rat, Elephant, Rabbit (100%), Monkey, Galago, Pig (92%), Guinea pig (91%), Hamster (90%), Dog, Bovine, Bat, Horse, Platypus (84%). Type of Immunogen: Synthetic peptide
Specificity:	Rat PKIB
Predicted Reactivity:	Percent identity by BLAST analysis: Human, Mouse, Rat, Rabbit (100%) Guinea pig (91%) Dog, Bovine, Horse (84%).
Purification:	Immunoaffinity purified

Target Details

Target:	PKIB
Alternative Name:	PKIB (PKIB Products)
Background:	Name/Gene ID: PKIB Synonyms: PKIB, PRKACN2, PKI-beta
Gene ID:	5570
NCBI Accession:	NP_001070021
UniProt:	Q9C010
Pathways:	Myometrial Relaxation and Contraction

Application Details

Application Notes:	Approved: WB (1 µg/mL) Usage: Western Blot: Suggested dilution at 1 µg/mL in 5 % skim milk / PBS buffer, and HRP conjugated anti-Rabbit IgG should be diluted in 1: 50,000 - 100,000 as secondary antibody.
Comment:	Target Species of Antibody: Rat
Restrictions:	For Research Use only

Handling

Format:	Lyophilized
Reconstitution:	Distilled water
Concentration:	Lot specific
Buffer:	Lyophilized from PBS with 2 % sucrose
Handling Advice:	Avoid repeat freeze-thaw cycles.
Storage:	4 °C,-20 °C
Storage Comment:	Long term: -20°C, the use of 50% glycerol is recommended if storing aliquots in -20°C for long term use (up to 1 year) Short term (less than 1 week): 4°C. Avoid freeze-thaw cycles.

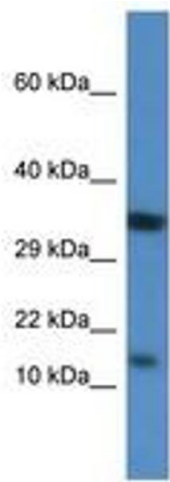


Image 1.