



[Go to Product page](#)

Datasheet for ABIN6746536
anti-ARIH2 antibody (N-Term)

1 Image

Overview

Quantity:	100 µL
Target:	ARIH2
Binding Specificity:	N-Term
Reactivity:	Human, Mouse, Rat, Dog, Cow, Horse, Rabbit, Guinea Pig, Chicken, Pig, Monkey, Bat
Host:	Rabbit
Clonality:	Polyclonal
Conjugate:	This ARIH2 antibody is un-conjugated
Application:	Western Blotting (WB)

Product Details

Immunogen:	Synthetic peptide from N-Terminus of human ARIH2 (O95376, NP_006312). Percent identity by BLAST analysis: Human, Gorilla, Gibbon, Galago, Marmoset, Mouse, Rat, Elephant, Panda, Dog, Bovine, Bat, Rabbit, Horse, Pig, Guinea pig, Turkey, Zebra finch, Chicken, Platypus, Lizard (100%), Xenopus (92%). Type of Immunogen: Synthetic peptide
Specificity:	Human ARIH2
Predicted Reactivity:	Percent identity by BLAST analysis: Human, Mouse, Rat, Dog, Bovine, Rabbit, Horse, Pig, Guinea pig, Chicken (100%) Xenopus (92%).
Purification:	Immunoaffinity purified

Target Details

Target:	ARIH2
Alternative Name:	ARIH2 (ARIH2 Products)
Background:	Name/Gene ID: ARIH2 Synonyms: ARIH2, Ariadne homolog 2 (Drosophila), ARI-2, ARI2, Protein ariadne-2 homolog, TRIAD1, Triad1 protein, Ariadne (Drosophila) homolog 2
Gene ID:	10425
NCBI Accession:	NP_006312
UniProt:	O95376

Application Details

Application Notes:	Approved: WB (0.2 - 1 µg/mL) Usage: Western Blot: Suggested dilution at 1 µg/mL in 5 % skim milk / PBS buffer, and HRP conjugated anti-Rabbit IgG should be diluted in 1: 50,000 - 100,000 as secondary antibody.
Comment:	Target Species of Antibody: Human
Restrictions:	For Research Use only

Handling

Format:	Lyophilized
Reconstitution:	Distilled water
Concentration:	Lot specific
Buffer:	Lyophilized from PBS with 2 % sucrose
Handling Advice:	Avoid repeat freeze-thaw cycles.
Storage:	4 °C, -20 °C
Storage Comment:	Long term: -20°C, the use of 50% glycerol is recommended if storing aliquots in -20°C for long term use (up to 1 year) Short term (less than 1 week): 4°C. Avoid freeze-thaw cycles.

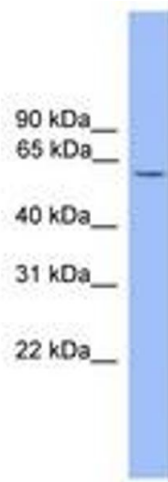


Image 1.