



[Go to Product page](#)

Datasheet for ABIN6746539  
**anti-CACNG1 antibody (AA 62-111)**

1 Image

Overview

Quantity:	100 µL
Target:	CACNG1
Binding Specificity:	AA 62-111
Reactivity:	Mouse, Human, Rat, Rabbit, Guinea Pig, Bat, Hamster, Monkey
Host:	Rabbit
Clonality:	Polyclonal
Conjugate:	This CACNG1 antibody is un-conjugated
Application:	Western Blotting (WB)

Product Details

Immunogen:	Synthetic peptide located between aa62-111 of mouse Cacng1 (070578, NP_031608). Percent identity by BLAST analysis: Human, Gorilla, Gibbon, Monkey, Galago, Marmoset, Mouse, Rat, Hamster, Bat, Rabbit, Guinea pig (100%), Elephant, Dog, Bovine, Horse, Opossum, Turkey, Zebra finch, Chicken, Platypus, Xenopus (92%), Pig (85%).  Type of Immunogen: Synthetic peptide
Specificity:	Mouse CACNG1
Predicted Reactivity:	Percent identity by BLAST analysis: Mouse, Rat (100%) Dog, Chicken, Xenopus (92%).
Purification:	Immunoaffinity purified

## Target Details

---

Target:	CACNG1
Alternative Name:	CACNG1 / CACNG ( <a href="#">CACNG1 Products</a> )
Background:	Name/Gene ID: CACNG1 Subfamily: Calcium channel - gamma subunit Family: Ion Channel  Synonyms: CACNG1, CACNG, CACNLG, Gamma 1
Gene ID:	786
NCBI Accession:	<a href="#">NP_031608</a>
UniProt:	<a href="#">Q06432</a>

## Application Details

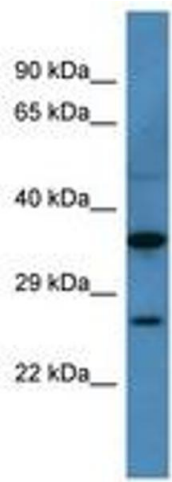
---

Application Notes:	Approved: WB (0.2 - 1 µg/mL)  Usage: Western Blot: Suggested dilution at 1 µg/mL in 5 % skim milk / PBS buffer, and HRP conjugated anti-Rabbit IgG should be diluted in 1: 50,000 - 100,000 as secondary antibody.
Comment:	Target Species of Antibody: Mouse
Restrictions:	For Research Use only

## Handling

---

Format:	Lyophilized
Reconstitution:	Distilled water
Concentration:	Lot specific
Buffer:	Lyophilized from PBS with 2 % sucrose
Handling Advice:	Avoid repeat freeze-thaw cycles.
Storage:	4 °C, -20 °C
Storage Comment:	Long term: -20°C, the use of 50% glycerol is recommended if storing aliquots in -20°C for long term use (up to 1 year) Short term (less than 1 week): 4°C. Avoid freeze-thaw cycles.



**Image 1.**