

Datasheet for ABIN6746545
anti-ATG3 antibody (AA 91-140)



[Go to Product page](#)

1 Image

Overview

Quantity:	100 µL
Target:	ATG3
Binding Specificity:	AA 91-140
Reactivity:	Human, Mouse, Rat, Dog, Monkey, Cow, Guinea Pig
Host:	Rabbit
Clonality:	Polyclonal
Conjugate:	This ATG3 antibody is un-conjugated
Application:	Western Blotting (WB)

Product Details

Immunogen:	Synthetic peptide located between aa91-140 of human ATG3 (Q9NT62, NP_071933). Percent identity by BLAST analysis: Human, Chimpanzee, Gorilla, Gibbon, Monkey (100%), Elephant, Rabbit, Guinea pig (85%), Mouse, Rat (78%). Type of Immunogen: Synthetic peptide
Specificity:	Human ATG3
Predicted Reactivity:	Percent identity by BLAST analysis: Human (100%) Guinea pig (85%).
Purification:	Immunoaffinity purified

Target Details

Target:	ATG3
---------	------

Target Details

Alternative Name:	ATG3 (ATG3 Products)
Background:	Name/Gene ID: ATG3 Synonyms: ATG3, APG3-LIKE, APG3, APG3L, Autophagy related 3, HAp3, PC3-96, Protein PC3-96, Autophagy-related protein 3
Gene ID:	64422
NCBI Accession:	NP_071933
UniProt:	Q9NT62
Pathways:	Autophagy

Application Details

Application Notes:	Approved: WB (0.2 - 1 µg/mL) Usage: Western Blot: Suggested dilution at 1 µg/mL in 5 % skim milk / PBS buffer, and HRP conjugated anti-Rabbit IgG should be diluted in 1: 50,000 - 100,000 as secondary antibody.
Comment:	Target Species of Antibody: Human
Restrictions:	For Research Use only

Handling

Format:	Lyophilized
Reconstitution:	Distilled water
Concentration:	Lot specific
Buffer:	Lyophilized from PBS with 2 % sucrose
Handling Advice:	Avoid repeat freeze-thaw cycles.
Storage:	4 °C, -20 °C
Storage Comment:	Long term: -20°C, the use of 50% glycerol is recommended if storing aliquots in -20°C for long term use (up to 1 year) Short term (less than 1 week): 4°C. Avoid freeze-thaw cycles.

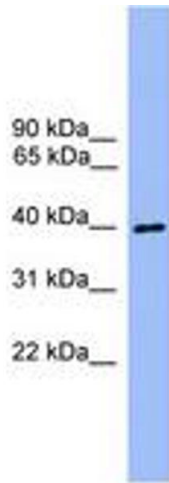


Image 1.