

Datasheet for ABIN6746556  
**anti-ALDH3A1 antibody (AA 51-100)**



[Go to Product page](#)

1 Image

## Overview

Quantity:	100 µL
Target:	ALDH3A1
Binding Specificity:	AA 51-100
Reactivity:	Human, Dog, Guinea Pig, Monkey, Pig
Host:	Rabbit
Clonality:	Polyclonal
Conjugate:	This ALDH3A1 antibody is un-conjugated
Application:	Western Blotting (WB)

## Product Details

Immunogen:	Synthetic peptide located between aa51-100 of human ALDH3A1 (P30838, NP_000682). Percent identity by BLAST analysis: Human, Gorilla, Gibbon, Monkey, Marmoset, Elephant, Dog, Pig, Guinea pig (100%), Galago, Bovine (92%), Bat (85%), Rat (78%).  Type of Immunogen: Synthetic peptide
Specificity:	Human ALDH3A1
Predicted Reactivity:	Percent identity by BLAST analysis: Human, Dog, Pig (100%) Bovine (92%).
Purification:	Immunoaffinity purified

## Target Details

Target:	ALDH3A1
---------	---------

## Target Details

---

Alternative Name:	ALDH3A1 ( <a href="#">ALDH3A1 Products</a> )
Background:	Name/Gene ID: ALDH3A1  Synonyms: ALDH3A1, Aldehyde dehydrogenase 3, ALDH3, ALDHIII, Stomach aldehyde dehydrogenase
Gene ID:	218
NCBI Accession:	<a href="#">NP_000682</a>
UniProt:	<a href="#">P30838</a>

## Application Details

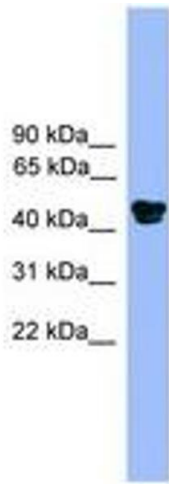
---

Application Notes:	Approved: WB (1 µg/mL)  Usage: Western Blot: Suggested dilution at 1 µg/mL in 5 % skim milk / PBS buffer, and HRP conjugated anti-Rabbit IgG should be diluted in 1: 50,000 - 100,000 as secondary antibody.
Comment:	Target Species of Antibody: Human
Restrictions:	For Research Use only

## Handling

---

Format:	Lyophilized
Reconstitution:	Distilled water
Concentration:	Lot specific
Buffer:	Lyophilized from PBS with 2 % sucrose
Handling Advice:	Avoid repeat freeze-thaw cycles.
Storage:	4 °C, -20 °C
Storage Comment:	Long term: -20°C, the use of 50% glycerol is recommended if storing aliquots in -20°C for long term use (up to 1 year)  Short term (less than 1 week): 4°C. Avoid freeze-thaw cycles.



**Image 1.**