



[Go to Product page](#)

Datasheet for ABIN6746570
anti-ACSF2 antibody (AA 403-452)

1 Image

Overview

Quantity:	100 µL
Target:	ACSF2
Binding Specificity:	AA 403-452
Reactivity:	Human, Rat, Mouse, Cow, Guinea Pig, Horse, Monkey
Host:	Rabbit
Clonality:	Polyclonal
Conjugate:	This ACSF2 antibody is un-conjugated
Application:	Western Blotting (WB)

Product Details

Immunogen:	Synthetic peptide located between aa403-452 of human ACSF2 (Q8VCW8, NP_079425). Percent identity by BLAST analysis: Human, Chimpanzee, Gorilla, Orangutan, Gibbon, Monkey, Galago, Marmoset, Rat, Elephant, Panda, Bovine (100%), Hamster, Dog, Rabbit (92%), Mouse, Guinea pig (85%), Horse (84%). Type of Immunogen: Synthetic peptide
Specificity:	Human ACSF2
Predicted Reactivity:	Percent identity by BLAST analysis: Human, Bovine (100%) Dog, Rabbit (92%) Mouse, Rat, Guinea pig (85%) Horse (84%).
Purification:	Immunoaffinity purified

Target Details

Target:	ACSF2
Alternative Name:	ACSF2 (ACSF2 Products)
Background:	Name/Gene ID: ACSF2 Synonyms: ACSF2, AVYV493, ACSMW
Gene ID:	80221
NCBI Accession:	NP_079425
UniProt:	Q96CM8

Application Details

Application Notes:	Approved: WB (1 µg/mL) Usage: Western Blot: Suggested dilution at 1 µg/mL in 5 % skim milk / PBS buffer, and HRP conjugated anti-Rabbit IgG should be diluted in 1: 50,000 - 100,000 as secondary antibody.
Comment:	Target Species of Antibody: Human
Restrictions:	For Research Use only

Handling

Format:	Lyophilized
Reconstitution:	Distilled water
Concentration:	Lot specific
Buffer:	Lyophilized from PBS with 2 % sucrose
Handling Advice:	Avoid repeat freeze-thaw cycles.
Storage:	4 °C, -20 °C
Storage Comment:	Long term: -20°C, the use of 50% glycerol is recommended if storing aliquots in -20°C for long term use (up to 1 year) Short term (less than 1 week): 4°C. Avoid freeze-thaw cycles.

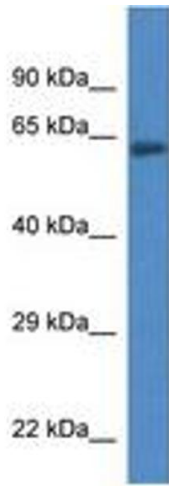


Image 1.