



[Go to Product page](#)

Datasheet for ABIN6746576
anti-USP2 antibody (AA 71-120)

1 Image

Overview

Quantity:	100 µL
Target:	USP2
Binding Specificity:	AA 71-120
Reactivity:	Human, Rat, Dog, Cow, Monkey
Host:	Rabbit
Clonality:	Polyclonal
Conjugate:	This USP2 antibody is un-conjugated
Application:	Western Blotting (WB)

Product Details

Immunogen:	Synthetic peptide located between aa71-120 of human USP2 (O75604, NP_004196). Percent identity by BLAST analysis: Human, Chimpanzee, Monkey, Dog, Bovine (100%), Gibbon, Galago, Elephant, Rabbit, Guinea pig (92%), Marmoset, Panda, Horse (85%), Mouse (83%), Rat (78%). Type of Immunogen: Synthetic peptide
Specificity:	Human USP2
Predicted Reactivity:	Percent identity by BLAST analysis: Human, Dog (100%) Guinea pig (92%).
Purification:	Immunoaffinity purified

Target Details

Target:	USP2
---------	------

Target Details

Alternative Name: [USP2 \(USP2 Products\)](#)

Background: Name/Gene ID: USP2
Subfamily: Cysteine C19
Family: Protease

Synonyms: USP2, Deubiquitinating enzyme 2, Ubiquitin specific peptidase 2, Ubiquitin specific protease 9, USP9, Ubiquitin specific protease 12, Ubiquitin specific protease 2, Ubiquitin thioesterase 2, UBP41

Gene ID: 9099

NCBI Accession: [NP_004196](#)

UniProt: [O75604](#)

Application Details

Application Notes: Approved: WB (0.2 - 1 µg/mL)

Usage: Western Blot: Suggested dilution at 1 µg/mL in 5 % skim milk / PBS buffer, and HRP conjugated anti-Rabbit IgG should be diluted in 1: 50,000 - 100,000 as secondary antibody.

Comment: Target Species of Antibody: Human

Restrictions: For Research Use only

Handling

Format: Lyophilized

Reconstitution: Distilled water

Concentration: Lot specific

Buffer: Lyophilized from PBS with 2 % sucrose

Handling Advice: Avoid repeat freeze-thaw cycles.

Storage: 4 °C, -20 °C

Storage Comment: Long term: -20°C, the use of 50% glycerol is recommended if storing aliquots in -20°C for long term use (up to 1 year)

Short term (less than 1 week): 4°C. Avoid freeze-thaw cycles.

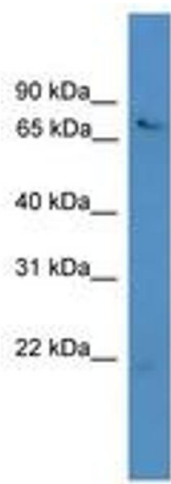


Image 1.