



[Go to Product page](#)

Datasheet for ABIN6746580
anti-ZER1 antibody (AA 421-470)

1 Image

Overview

Quantity:	100 µL
Target:	ZER1
Binding Specificity:	AA 421-470
Reactivity:	Human, Mouse, Rat, Horse, Rabbit, Pig, Zebrafish (Danio rerio), Monkey, Bat
Host:	Rabbit
Clonality:	Polyclonal
Conjugate:	This ZER1 antibody is un-conjugated
Application:	Western Blotting (WB)

Product Details

Immunogen:	Synthetic peptide located between aa421-470 of human ZER1 (Q7Z7L7, NP_006327). Percent identity by BLAST analysis: Human, Chimpanzee, Gorilla, Orangutan, Monkey, Galago, Marmoset, Mouse, Rat, Bat, Horse, Pig (100%), Hamster, Dog, Bovine, Opossum, Guinea pig, Zebra finch (92%), Rabbit, Turkey, Chicken, Xenopus (85%). Type of Immunogen: Synthetic peptide
Specificity:	Human ZER1
Predicted Reactivity:	Percent identity by BLAST analysis: Human, Mouse, Rat, Horse, Pig (100%) Dog, Bovine (92%) Rabbit, Chicken, Xenopus (85%).
Purification:	Immunoaffinity purified

Target Details

Target:	ZER1
Alternative Name:	ZER1 (ZER1 Products)
Background:	Name/Gene ID: ZER1 Synonyms: ZER1, C9orf60, Hzyg, Homolog of Zyg-11, Protein zer-1 homolog, ZYG11BL, ZYG, ZYG homolog, RP11-545E17.4, Zer-1 homolog (C. elegans), Zyg-11 homolog B-like protein
Gene ID:	10444
NCBI Accession:	NP_006327
UniProt:	Q7Z7L7
Pathways:	Proton Transport

Application Details

Application Notes:	Approved: WB (1 µg/mL) Usage: Western Blot: Suggested dilution at 1 µg/mL in 5 % skim milk / PBS buffer, and HRP conjugated anti-Rabbit IgG should be diluted in 1: 50,000 - 100,000 as secondary antibody.
Comment:	Target Species of Antibody: Human
Restrictions:	For Research Use only

Handling

Format:	Lyophilized
Reconstitution:	Distilled water
Concentration:	Lot specific
Buffer:	Lyophilized from PBS with 2 % sucrose
Handling Advice:	Avoid repeat freeze-thaw cycles.
Storage:	4 °C,-20 °C
Storage Comment:	Long term: -20°C, the use of 50% glycerol is recommended if storing aliquots in -20°C for long term use (up to 1 year) Short term (less than 1 week): 4°C. Avoid freeze-thaw cycles.

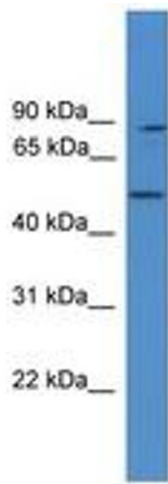


Image 1.