



Datasheet for ABIN6746584
anti-SCG3 antibody (AA 337-386)



[Go to Product page](#)

1 Image

Overview

Quantity:	100 µL
Target:	SCG3
Binding Specificity:	AA 337-386
Reactivity:	Human, Rat, Horse, Dog, Cow, Pig, Monkey, Bat
Host:	Rabbit
Clonality:	Polyclonal
Conjugate:	This SCG3 antibody is un-conjugated
Application:	Western Blotting (WB)

Product Details

Immunogen:	Synthetic peptide located between aa337-386 of human SCG3 (Q8WXD2, NP_037375). Percent identity by BLAST analysis: Human, Chimpanzee, Gorilla, Orangutan, Gibbon, Monkey, Galago, Marmoset, Rat, Elephant, Dog, Bovine, Bat, Horse, Pig (100%), Mouse, Rabbit, Guinea pig (92%), Opossum (84%). Type of Immunogen: Synthetic peptide
Specificity:	Human SCG3 / Secretogranin 3
Predicted Reactivity:	Percent identity by BLAST analysis: Human, Rat, Dog, Bovine, Horse, Pig (100%) Mouse, Rabbit, Guinea pig (92%).
Purification:	Immunoaffinity purified

Target Details

Target:	SCG3
Alternative Name:	SCG3 / Secretogranin 3 (SCG3 Products)
Background:	Name/Gene ID: SCG3 Synonyms: SCG3, Secretogranin-3, Secretogranin III, SGIII
Gene ID:	29106
NCBI Accession:	NP_037375
UniProt:	Q8WXD2

Application Details

Application Notes:	Approved: WB (0.2 - 1 µg/mL) Usage: Western Blot: Suggested dilution at 1 µg/mL in 5 % skim milk / PBS buffer, and HRP conjugated anti-Rabbit IgG should be diluted in 1: 50,000 - 100,000 as secondary antibody.
Comment:	Target Species of Antibody: Human
Restrictions:	For Research Use only

Handling

Format:	Lyophilized
Reconstitution:	Distilled water
Concentration:	Lot specific
Buffer:	Lyophilized from PBS with 2 % sucrose
Handling Advice:	Avoid repeat freeze-thaw cycles.
Storage:	4 °C, -20 °C
Storage Comment:	Long term: -20°C, the use of 50% glycerol is recommended if storing aliquots in -20°C for long term use (up to 1 year) Short term (less than 1 week): 4°C. Avoid freeze-thaw cycles.

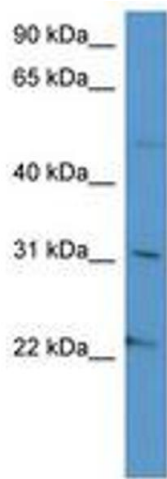


Image 1.