



[Go to Product page](#)

Datasheet for ABIN6746588

anti-SCAMP3 antibody (AA 21-70)

1 Image

Overview

Quantity:	100 µL
Target:	SCAMP3
Binding Specificity:	AA 21-70
Reactivity:	Human, Guinea Pig, Rabbit, Cow, Dog, Monkey, Xenopus laevis, Bat
Host:	Rabbit
Clonality:	Polyclonal
Conjugate:	This SCAMP3 antibody is un-conjugated
Application:	Western Blotting (WB)

Product Details

Immunogen:	Synthetic peptide located between aa21-70 of human SCAMP3 (O14828-2, NP_443069). Percent identity by BLAST analysis: Human, Chimpanzee, Gibbon, Monkey, Galago, Marmoset, Elephant, Panda, Dog, Bovine, Bat, Rabbit, Opossum, Guinea pig, Xenopus (100%), Mouse, Rat, Hamster, Horse (92%), Zebra finch, Stickleback (90%). Type of Immunogen: Synthetic peptide
Specificity:	Human SCAMP3
Predicted Reactivity:	Percent identity by BLAST analysis: Human, Dog, Rabbit, Xenopus (100%) Mouse, Rat, Horse (92%).
Purification:	Immunoaffinity purified

Target Details

Target:	SCAMP3
Alternative Name:	SCAMP3 (SCAMP3 Products)
Background:	Name/Gene ID: SCAMP3 Synonyms: SCAMP3, C1orf3, Propin 1, PROPIN1
Gene ID:	10067
NCBI Accession:	NP_443069
UniProt:	O14828

Application Details

Application Notes:	Approved: WB (0.2 - 1 µg/mL) Usage: Western Blot: Suggested dilution at 1 µg/mL in 5 % skim milk / PBS buffer, and HRP conjugated anti-Rabbit IgG should be diluted in 1: 50,000 - 100,000 as secondary antibody.
Comment:	Target Species of Antibody: Human
Restrictions:	For Research Use only

Handling

Format:	Lyophilized
Reconstitution:	Distilled water
Concentration:	Lot specific
Buffer:	Lyophilized from PBS with 2 % sucrose
Handling Advice:	Avoid repeat freeze-thaw cycles.
Storage:	4 °C, -20 °C
Storage Comment:	Long term: -20°C, the use of 50% glycerol is recommended if storing aliquots in -20°C for long term use (up to 1 year) Short term (less than 1 week): 4°C. Avoid freeze-thaw cycles.

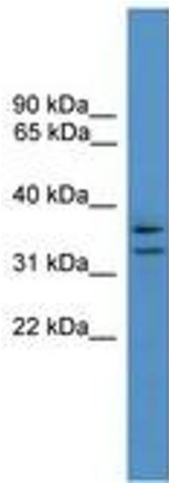


Image 1.