



[Go to Product page](#)

Datasheet for ABIN6746592

anti-SYT16 antibody (AA 51-100)

1 Image

1 Publication

Overview

Quantity:	100 µL
Target:	SYT16
Binding Specificity:	AA 51-100
Reactivity:	Human, Dog, Pig
Host:	Rabbit
Clonality:	Polyclonal
Conjugate:	This SYT16 antibody is un-conjugated
Application:	Western Blotting (WB)

Product Details

Immunogen:	Synthetic peptide located between aa51-100 of human SYT16 (Q17RD7, NP_114120). Percent identity by BLAST analysis: Human, Gorilla, Gibbon, Monkey (100%), Marmoset, Elephant, Rabbit, Horse (92%), Dog, Pig (85%). Type of Immunogen: Synthetic peptide
Specificity:	Human SYT16
Predicted Reactivity:	Percent identity by BLAST analysis: Human (100%) Rabbit, Horse (92%) Dog, Pig (85%).
Purification:	Immunoaffinity purified

Target Details

Target:	SYT16
---------	-------

Target Details

Alternative Name: SYT16 ([SYT16 Products](#))

Background: Name/Gene ID: SYT16

Synonyms: SYT16, Chr14 synaptotagmin, CHR14SYT, Syt14r, Synaptotagmin-16, Synaptotagmin XVI, Strep14, Synaptotagmin 14-like protein, Synaptotagmin XIV-like, SYT14L, Yt14r

Gene ID: 83851

NCBI Accession: [NP_114120](#)

UniProt: [Q17RD7](#)

Application Details

Application Notes: Approved: WB (0.2 - 1 µg/mL)

Usage: Western Blot: Suggested dilution at 1 µg/mL in 5 % skim milk / PBS buffer, and HRP conjugated anti-Rabbit IgG should be diluted in 1: 50,000 - 100,000 as secondary antibody.

Comment: Target Species of Antibody: Human

Restrictions: For Research Use only

Handling

Format: Lyophilized

Reconstitution: Distilled water

Concentration: Lot specific

Buffer: Lyophilized from PBS with 2 % sucrose

Handling Advice: Avoid repeat freeze-thaw cycles.

Storage: 4 °C, -20 °C

Storage Comment: Long term: -20°C, the use of 50% glycerol is recommended if storing aliquots in -20°C for long term use (up to 1 year)
Short term (less than 1 week): 4°C. Avoid freeze-thaw cycles.

Publications

Product cited in: Kohda, Ishibashi, Shimbara, Tanaka, Matsuda, Kasahara et al.: "Characterization of the mouse PA28 activator complex gene family: complete organizations of the three member genes and a physical map of the approximately 150-kb region containing the alpha- and ..." in: **Journal of immunology (Baltimore, Md. : 1950)**, Vol. 160, Issue 10, pp. 4923-35, (1998) ([PubMed](#)).

Images

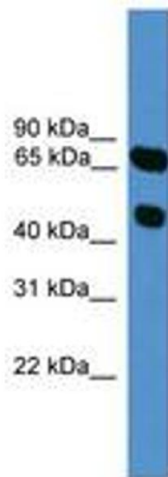


Image 1.