



[Go to Product page](#)

Datasheet for ABIN6746616
anti-COCH antibody (C-Term)

1 Image

Overview

Quantity:	100 µL
Target:	COCH
Binding Specificity:	C-Term
Reactivity:	Human, Mouse, Rat, Cow, Dog, Guinea Pig, Rabbit, Horse, Zebrafish (Danio rerio), Monkey, Bat, Pig
Host:	Rabbit
Clonality:	Polyclonal
Conjugate:	This COCH antibody is un-conjugated
Application:	Western Blotting (WB)

Product Details

Immunogen:	Synthetic peptide from C-Terminus of human COCH (O43405, NP_001128530). Percent identity by BLAST analysis: Human, Chimpanzee, Gorilla, Gibbon, Monkey, Galago, Marmoset, Mouse, Rat, Elephant, Panda, Dog, Bovine, Bat, Rabbit, Horse, Pig, Guinea pig (100%), Opossum, Platypus (85%). Type of Immunogen: Synthetic peptide
Specificity:	Human COCH
Predicted Reactivity:	Percent identity by BLAST analysis: Human, Mouse, Rat, Dog, Bovine, Rabbit, Horse, Guinea pig (100%).
Purification:	Immunoaffinity purified

Target Details

Target:	COCH
Alternative Name:	Cochlin / COCH (COCH Products)
Background:	Name/Gene ID: COCH Synonyms: COCH, COCH5B2, COCH-5B2, Cochlin, DFNA9, DFNA31
Gene ID:	1690
NCBI Accession:	NP_001128530
UniProt:	O43405
Pathways:	Sensory Perception of Sound

Application Details

Application Notes:	Approved: WB (0.2 - 1 µg/mL) Usage: Western Blot: Suggested dilution at 1 µg/mL in 5 % skim milk / PBS buffer, and HRP conjugated anti-Rabbit IgG should be diluted in 1: 50,000 - 100,000 as secondary antibody.
Comment:	Target Species of Antibody: Human
Restrictions:	For Research Use only

Handling

Format:	Lyophilized
Reconstitution:	Distilled water
Concentration:	Lot specific
Buffer:	Lyophilized from PBS with 2 % sucrose
Handling Advice:	Avoid repeat freeze-thaw cycles.
Storage:	4 °C,-20 °C
Storage Comment:	Long term: -20°C, the use of 50% glycerol is recommended if storing aliquots in -20°C for long term use (up to 1 year) Short term (less than 1 week): 4°C. Avoid freeze-thaw cycles.

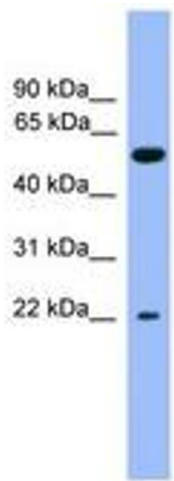


Image 1.