

Datasheet for ABIN6746618
anti-ALDH5A1 antibody (AA 161-210)[Go to Product page](#)

1 Image

Overview

Quantity:	100 µL
Target:	ALDH5A1
Binding Specificity:	AA 161-210
Reactivity:	Human, Cow, Rabbit, Guinea Pig, Pig
Host:	Rabbit
Clonality:	Polyclonal
Conjugate:	This ALDH5A1 antibody is un-conjugated
Application:	Western Blotting (WB)

Product Details

Immunogen:	Synthetic peptide located between aa161-210 of human ALDH5A1 (P51649, NP_001071). Percent identity by BLAST analysis: Human (100%), Chimpanzee, Gorilla, Orangutan, Gibbon (92%), Monkey, Bovine (85%). Type of Immunogen: Synthetic peptide
Specificity:	Human ALDH5A1
Predicted Reactivity:	Percent identity by BLAST analysis: Human (100%) Bovine (85%).
Purification:	Immunoaffinity purified

Target Details

Target:	ALDH5A1
---------	---------

Target Details

Alternative Name:	ALDH5A1 (ALDH5A1 Products)
Background:	Name/Gene ID: ALDH5A1 Synonyms: ALDH5A1, SSADH, SSDH
Gene ID:	7915
NCBI Accession:	NP_001071
UniProt:	P51649
Pathways:	Monocarboxylic Acid Catabolic Process

Application Details

Application Notes:	Approved: WB (0.2 - 1 µg/mL) Usage: Western Blot: Suggested dilution at 1 µg/mL in 5 % skim milk / PBS buffer, and HRP conjugated anti-Rabbit IgG should be diluted in 1: 50,000 - 100,000 as secondary antibody.
Comment:	Target Species of Antibody: Human
Restrictions:	For Research Use only

Handling

Format:	Lyophilized
Reconstitution:	Distilled water
Concentration:	Lot specific
Buffer:	Lyophilized from PBS with 2 % sucrose
Handling Advice:	Avoid repeat freeze-thaw cycles.
Storage:	4 °C, -20 °C
Storage Comment:	Long term: -20°C, the use of 50% glycerol is recommended if storing aliquots in -20°C for long term use (up to 1 year) Short term (less than 1 week): 4°C. Avoid freeze-thaw cycles.

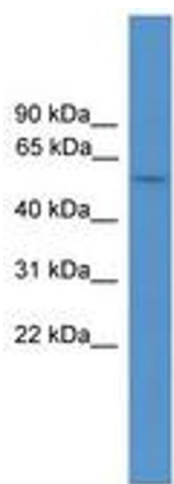


Image 1.