



[Go to Product page](#)

Datasheet for ABIN6746620
anti-GRM7 antibody (C-Term)

1 Image

Overview

Quantity:	100 µL
Target:	GRM7
Binding Specificity:	C-Term
Reactivity:	Human, Rat, Mouse, Dog, Cow, Rabbit, Horse, Monkey, Guinea Pig, Chicken, Xenopus laevis
Host:	Rabbit
Clonality:	Polyclonal
Conjugate:	This GRM7 antibody is un-conjugated
Application:	Western Blotting (WB)

Product Details

Immunogen:	Synthetic peptide from C-Terminus of human GRM7 (Q14831, NP_000835). Percent identity by BLAST analysis: Human, Chimpanzee, Gorilla, Orangutan, Gibbon, Monkey, Galago, Marmoset, Mouse, Rat, Elephant, Dog, Bovine, Rabbit, Horse, Opossum, Guinea pig, Chicken, Xenopus (100%), Turkey (92%). Type of Immunogen: Synthetic peptide
Specificity:	Human GRM7 / MGLUR7
Predicted Reactivity:	Percent identity by BLAST analysis: Human, Mouse, Rat, Dog, Bovine, Rabbit, Horse, Guinea pig, Chicken (100%).
Purification:	Immunoaffinity purified

Target Details

Target:	GRM7
Alternative Name:	GRM7 / MGLUR7 (GRM7 Products)
Background:	Name/Gene ID: GRM7 Subfamily: Metabotropic glutamate Family: GPCR Synonyms: GRM7, GLUR7, MGLU7, MGLUR7, GPRC1G
Gene ID:	2917
NCBI Accession:	NP_000835
UniProt:	Q14831
Pathways:	Sensory Perception of Sound , cAMP Metabolic Process , Feeding Behaviour

Application Details

Application Notes:	Approved: WB (0.2 - 1 µg/mL) Usage: Western Blot: Suggested dilution at 1 µg/mL in 5 % skim milk / PBS buffer, and HRP conjugated anti-Rabbit IgG should be diluted in 1: 50,000 - 100,000 as secondary antibody.
Comment:	Target Species of Antibody: Human
Restrictions:	For Research Use only

Handling

Format:	Lyophilized
Reconstitution:	Distilled water
Concentration:	Lot specific
Buffer:	Lyophilized from PBS with 2 % sucrose
Handling Advice:	Avoid repeat freeze-thaw cycles.
Storage:	4 °C, -20 °C
Storage Comment:	Long term: -20°C, the use of 50% glycerol is recommended if storing aliquots in -20°C for long term use (up to 1 year) Short term (less than 1 week): 4°C. Avoid freeze-thaw cycles.

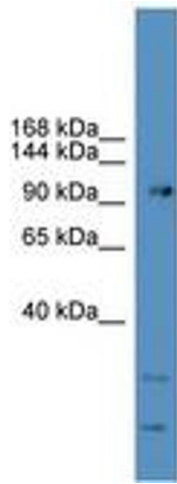


Image 1.