

Datasheet for ABIN6746621
anti-PC antibody (AA 981-1030)[Go to Product page](#)

1 Image

Overview

Quantity:	100 µL
Target:	PC
Binding Specificity:	AA 981-1030
Reactivity:	Human, Mouse, Pig, Dog, Horse, Guinea Pig
Host:	Rabbit
Clonality:	Polyclonal
Conjugate:	This PC antibody is un-conjugated
Application:	Western Blotting (WB)

Product Details

Immunogen:	Synthetic peptide located between aa981-1030 of human PC (P11498, NP_001035806). Percent identity by BLAST analysis: Human, Chimpanzee, Gorilla, Gibbon, Monkey (100%), Galago, Marmoset (92%), Mouse, Rat, Panda, Dog, Bovine, Horse, Pig (85%). Type of Immunogen: Synthetic peptide
Specificity:	Human PC / Pyruvate Carboxylase
Predicted Reactivity:	Percent identity by BLAST analysis: Human (100%) Mouse, Dog, Horse, Pig (85%).
Purification:	Immunoaffinity purified

Target Details

Target:	PC
---------	----

Target Details

Alternative Name:	PC / Pyruvate Carboxylase (PC Products)
Background:	Name/Gene ID: PC Synonyms: PC, PCB, Pyruvate carboxylase, Pyruvic carboxylase
Gene ID:	5091
NCBI Accession:	NP_001035806
UniProt:	P11498

Application Details

Application Notes:	Approved: WB (0.2 - 1 µg/mL) Usage: Western Blot: Suggested dilution at 1 µg/mL in 5 % skim milk / PBS buffer, and HRP conjugated anti-Rabbit IgG should be diluted in 1: 50,000 - 100,000 as secondary antibody.
Comment:	Target Species of Antibody: Human
Restrictions:	For Research Use only

Handling

Format:	Lyophilized
Reconstitution:	Distilled water
Concentration:	Lot specific
Buffer:	Lyophilized from PBS with 2 % sucrose
Handling Advice:	Avoid repeat freeze-thaw cycles.
Storage:	4 °C,-20 °C
Storage Comment:	Long term: -20°C, the use of 50% glycerol is recommended if storing aliquots in -20°C for long term use (up to 1 year) Short term (less than 1 week): 4°C. Avoid freeze-thaw cycles.

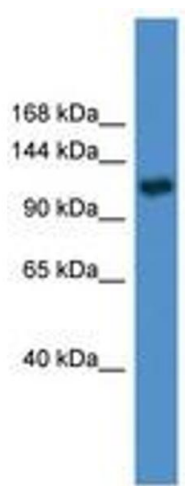


Image 1.