

Datasheet for ABIN674664  
**anti-FGFR3 antibody (AA 501-600)**[Go to Product page](#)

## 1 Image

## Overview

Quantity:	100 µL
Target:	FGFR3
Binding Specificity:	AA 501-600
Reactivity:	Human, Mouse, Rat
Host:	Rabbit
Clonality:	Polyclonal
Conjugate:	This FGFR3 antibody is un-conjugated
Application:	Western Blotting (WB), ELISA, Immunofluorescence (Paraffin-embedded Sections) (IF (p)), Immunohistochemistry (Paraffin-embedded Sections) (IHC (p)), Immunofluorescence (Cultured Cells) (IF (cc)), Immunohistochemistry (Frozen Sections) (IHC (fro))

## Product Details

Immunogen:	KLH conjugated synthetic peptide derived from human FGFR3
Isotype:	IgG
Cross-Reactivity:	Human, Mouse, Rat
Predicted Reactivity:	Dog,Cow,Sheep,Horse,Chicken
Purification:	Purified by Protein A.

## Target Details

Target:	FGFR3
---------	-------

## Target Details

Alternative Name:	FGFR3/CD333 ( <a href="#">FGFR3 Products</a> )
Background:	<p>Synonyms: ACH, CD 333, CD333, CD333 antigen, CEK 2, CEK2, FGFR 3, Fibroblast growth factor receptor 3 achondroplasia thanatophoric dwarfism, Fibroblast growth factor receptor 3, Heparin binding growth factor receptor, HSFGR3EX, Hydroxyaryl protein kinase, JTK 4, JTK4, MFR 3, SAM 3, Tyrosine kinase JTK 4, Tyrosine kinase JTK4, Z FGFR 3, FGFR3_HUMAN.</p> <p>Background: The encoded protein is synthesized mainly in corticotroph cells of the anterior pituitary where four cleavage sites are used, adrenocorticotrophin, essential for normal steroidogenesis and the maintenance of normal adrenal weight, and lipotropin beta are the major end products. In other tissues, including the hypothalamus, placenta, and epithelium, all cleavage sites may be used, giving rise to peptides with roles in pain and energy homeostasis, melanocyte stimulation, and immune modulation. These include several distinct melanotropins, lipotropins, and endorphins that are contained within the adrenocorticotrophin and beta-lipotropin peptides. Mutations in this gene have been associated with early onset obesity, adrenal insufficiency, and red hair pigmentation. Alternatively spliced transcript variants encoding the same protein have been described.</p>
Molecular Weight:	4.5kDa
Gene ID:	2261
Pathways:	<a href="#">RTK Signaling</a> , <a href="#">Fc-epsilon Receptor Signaling Pathway</a> , <a href="#">EGFR Signaling Pathway</a> , <a href="#">Neurotrophin Signaling Pathway</a> , <a href="#">Stem Cell Maintenance</a> , <a href="#">Growth Factor Binding</a>

## Application Details

Application Notes:	WB 1:300-5000 ELISA 1:500-1000 IHC-P 1:200-400 IHC-F 1:100-500 IF(IHC-P) 1:50-200 IF(IHC-F) 1:50-200 IF(ICC) 1:50-200
--------------------	---

Restrictions:	For Research Use only
---------------	-----------------------

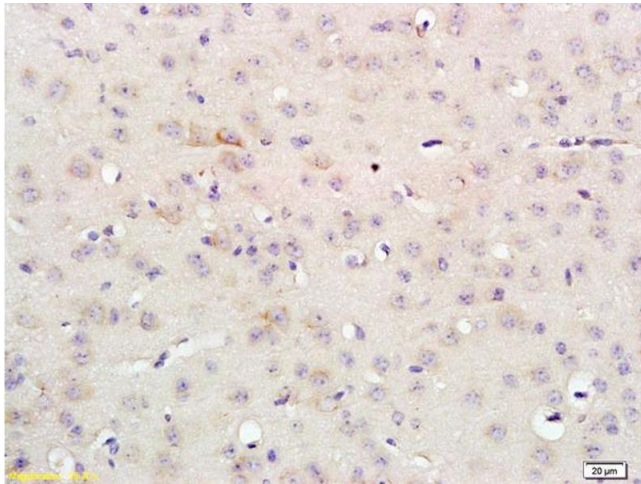
## Handling

Format:	Liquid
Concentration:	1 µg/µL

## Handling

Buffer:	0.01M TBS( pH 7.4) with 1 % BSA, 0.02 % Proclin300 and 50 % Glycerol.
Preservative:	ProClin
Precaution of Use:	This product contains ProClin: a POISONOUS AND HAZARDOUS SUBSTANCE, which should be handled by trained staff only.
Storage:	4 °C,-20 °C
Storage Comment:	Shipped at 4°C. Store at -20°C for one year. Avoid repeated freeze/thaw cycles.
Expiry Date:	12 months

## Images



### Immunohistochemistry

**Image 1.** Formalin-fixed and paraffin embedded rat brain labeled with Anti-FGFR3/CD333 Polyclonal Antibody, Unconjugated (ABIN674664) at 1:200 followed by conjugation to the secondary antibody and DAB staining