

Datasheet for ABIN6746645
anti-OR1L8 antibody (AA 201-250)[Go to Product page](#)

1 Image

Overview

Quantity:	100 µL
Target:	OR1L8
Binding Specificity:	AA 201-250
Reactivity:	Human, Monkey
Host:	Rabbit
Clonality:	Polyclonal
Conjugate:	This OR1L8 antibody is un-conjugated
Application:	Western Blotting (WB)

Product Details

Immunogen:	Synthetic peptide located between aa201-250 of human OR1L8 (Q8NGR8, NP_001004454). Percent identity by BLAST analysis: Human, Gibbon, Marmoset (100%), Mouse, Rat, Elephant, Bovine, Bat, Horse, Pig, Opossum, Guinea pig, Platypus (92%), Chimpanzee, Gorilla, Galago, Hamster, Panda, Dog, Rabbit (85%), Monkey (84%). Type of Immunogen: Synthetic peptide
Specificity:	Human OR1L8
Predicted Reactivity:	Percent identity by BLAST analysis: Human (100%).
Purification:	Immunoaffinity purified

Target Details

Target:	OR1L8
Alternative Name:	OR1L8 (OR1L8 Products)
Background:	Name/Gene ID: OR1L8 Subfamily: Olfactory Family: GPCR Synonyms: OR1L8, OR9-24, Olfactory receptor OR9-24, Olfactory receptor 1L8
Gene ID:	138881
NCBI Accession:	NP_001004454
UniProt:	Q8NGR8

Application Details

Application Notes:	Approved: WB (1 µg/mL) Usage: Western Blot: Suggested dilution at 1 µg/mL in 5 % skim milk / PBS buffer, and HRP conjugated anti-Rabbit IgG should be diluted in 1: 50,000 - 100,000 as secondary antibody.
Comment:	Target Species of Antibody: Human
Restrictions:	For Research Use only

Handling

Format:	Lyophilized
Reconstitution:	Distilled water
Concentration:	Lot specific
Buffer:	Lyophilized from PBS with 2 % sucrose
Handling Advice:	Avoid repeat freeze-thaw cycles.
Storage:	4 °C,-20 °C
Storage Comment:	Long term: -20°C, the use of 50% glycerol is recommended if storing aliquots in -20°C for long term use (up to 1 year) Short term (less than 1 week): 4°C. Avoid freeze-thaw cycles.

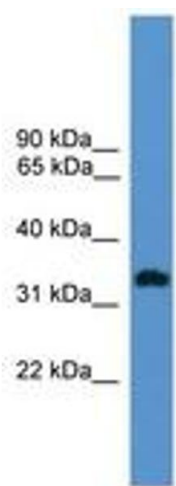


Image 1.