

Datasheet for ABIN6746651
anti-OR2C3 antibody (AA 251-300)[Go to Product page](#)

1 Image

Overview

Quantity:	100 µL
Target:	OR2C3
Binding Specificity:	AA 251-300
Reactivity:	Human
Host:	Rabbit
Clonality:	Polyclonal
Conjugate:	This OR2C3 antibody is un-conjugated
Application:	Western Blotting (WB)

Product Details

Immunogen:	Synthetic peptide located between aa251-300 of human OR2C3 (Q8N628, NP_932340). Percent identity by BLAST analysis: Human, Chimpanzee, Gorilla (100%), Galago, Elephant, Dog, Rabbit, Pig, Opossum (92%), Horse (85%). Type of Immunogen: Synthetic peptide
Specificity:	Human OR2C3
Predicted Reactivity:	Percent identity by BLAST analysis: Human (100%) Dog, Rabbit, Pig (92%).
Purification:	Immunoaffinity purified

Target Details

Target:	OR2C3
---------	-------

Target Details

Alternative Name:	OR2C3 (OR2C3 Products)
Background:	Name/Gene ID: OR2C3 Subfamily: Olfactory Family: GPCR Synonyms: OR2C3, Olfactory receptor 2C4, OR2C4, OR2C5P, OST742, Olfactory receptor OR1-30, Olfactory receptor 2C3, Olfactory receptor 2C5
Gene ID:	81472
NCBI Accession:	NP_932340
UniProt:	Q8N628

Application Details

Application Notes:	Approved: WB (1 µg/mL) Usage: Western Blot: Suggested dilution at 1 µg/mL in 5 % skim milk / PBS buffer, and HRP conjugated anti-Rabbit IgG should be diluted in 1: 50,000 - 100,000 as secondary antibody.
Comment:	Target Species of Antibody: Human
Restrictions:	For Research Use only

Handling

Format:	Lyophilized
Reconstitution:	Distilled water
Concentration:	Lot specific
Buffer:	Lyophilized from PBS with 2 % sucrose
Handling Advice:	Avoid repeat freeze-thaw cycles.
Storage:	4 °C,-20 °C
Storage Comment:	Long term: -20°C, the use of 50% glycerol is recommended if storing aliquots in -20°C for long term use (up to 1 year) Short term (less than 1 week): 4°C. Avoid freeze-thaw cycles.

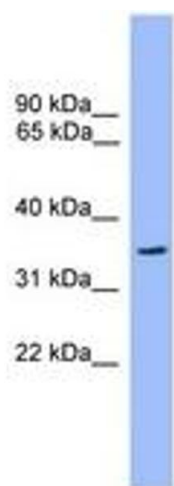


Image 1.