

Datasheet for ABIN6746652  
**anti-OR2D3 antibody (AA 251-300)**[Go to Product page](#)

## 1 Image

## Overview

Quantity:	100 µL
Target:	OR2D3
Binding Specificity:	AA 251-300
Reactivity:	Human
Host:	Rabbit
Clonality:	Polyclonal
Conjugate:	This OR2D3 antibody is un-conjugated
Application:	Western Blotting (WB)

## Product Details

Immunogen:	Synthetic peptide located between aa251-300 of human OR2D3 (Q8NGH3, NP_001004684). Percent identity by BLAST analysis: Human, Gorilla (100%), Marmoset, Elephant, Dog, Bovine, Horse (92%), Monkey (85%), Mouse, Rat (78%).  Type of Immunogen: Synthetic peptide
Specificity:	Human OR2D3
Predicted Reactivity:	Percent identity by BLAST analysis: Human (100%) Bovine (85%).
Purification:	Immunoaffinity purified

## Target Details

Target:	OR2D3
---------	-------

## Target Details

Alternative Name:	OR2D3 ( <a href="#">OR2D3 Products</a> )
Background:	Name/Gene ID: OR2D3 Subfamily: Olfactory Family: GPCR  Synonyms: OR2D3, OR11-89, Olfactory receptor OR11-89
Gene ID:	120775
NCBI Accession:	<a href="#">NP_001004684</a>
UniProt:	<a href="#">Q8NGH3</a>

## Application Details

Application Notes:	Approved: WB (1 µg/mL)  Usage: Western Blot: Suggested dilution at 1 µg/mL in 5 % skim milk / PBS buffer, and HRP conjugated anti-Rabbit IgG should be diluted in 1: 50,000 - 100,000 as secondary antibody.
Comment:	Target Species of Antibody: Human
Restrictions:	For Research Use only

## Handling

Format:	Lyophilized
Reconstitution:	Distilled water
Concentration:	Lot specific
Buffer:	Lyophilized from PBS with 2 % sucrose
Handling Advice:	Avoid repeat freeze-thaw cycles.
Storage:	4 °C, -20 °C
Storage Comment:	Long term: -20°C, the use of 50% glycerol is recommended if storing aliquots in -20°C for long term use (up to 1 year) Short term (less than 1 week): 4°C. Avoid freeze-thaw cycles.

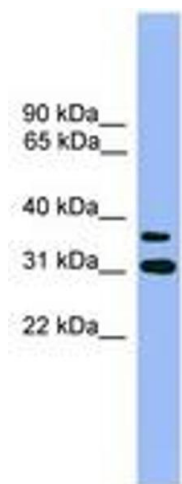


Image 1.