



Datasheet for ABIN6746666
anti-OPN1MW antibody (C-Term)



[Go to Product page](#)

1 Image

Overview

Quantity:	100 µL
Target:	OPN1MW
Binding Specificity:	C-Term
Reactivity:	Human, Mouse, Rabbit, Monkey
Host:	Rabbit
Clonality:	Polyclonal
Conjugate:	This OPN1MW antibody is un-conjugated
Application:	Western Blotting (WB)

Product Details

Immunogen:	Synthetic peptide from C-Terminus of human OPN1MW (P04000, NP_000504). Percent identity by BLAST analysis: Human, Chimpanzee, Gorilla, Gibbon, Baboon, Monkey, Marmoset, Cat (100%), Shrew, Panda, Dog, Platypus, Lizard (92%), Mouse, Rat, Goat, Hamster, Bovine, Rabbit, Horse, Pig, Opossum, Xenopus (85%). Type of Immunogen: Synthetic peptide
Specificity:	Human OPN1MW / CBD
Predicted Reactivity:	Percent identity by BLAST analysis: Human (100%) Mouse, Rabbit (85%).
Purification:	Immunoaffinity purified

Target Details

Target:	OPN1MW
Alternative Name:	OPN1MW / GCP (OPN1MW Products)
Background:	Name/Gene ID: OPN1MW Subfamily: Opsin Family: GPCR Synonyms: OPN1MW, CBD, CBBM, COD5, Color blindness, deutan, Cone dystrophy 5 (X-linked), Deutan, Green/red, GCP, Green cone pigment, Green photoreceptor pigment, GOP, Green opsin, OPN1MW1, Photopigment apoprotein, Medium-wave-sensitive opsin 1, Green-sensitive opsin
Gene ID:	2652
NCBI Accession:	NP_000504
UniProt:	P04001
Pathways:	Phototransduction

Application Details

Application Notes:	Approved: WB (0.2 - 1 µg/mL) Usage: Western Blot: Suggested dilution at 1 µg/mL in 5 % skim milk / PBS buffer, and HRP conjugated anti-Rabbit IgG should be diluted in 1: 50,000 - 100,000 as secondary antibody.
Comment:	Target Species of Antibody: Human
Restrictions:	For Research Use only

Handling

Format:	Lyophilized
Reconstitution:	Distilled water
Concentration:	Lot specific
Buffer:	Lyophilized from PBS with 2 % sucrose
Handling Advice:	Avoid repeat freeze-thaw cycles.
Storage:	4 °C,-20 °C
Storage Comment:	Long term: -20°C, the use of 50% glycerol is recommended if storing aliquots in -20°C for long

Handling

term use (up to 1 year)

Short term (less than 1 week): 4°C. Avoid freeze-thaw cycles.

Images

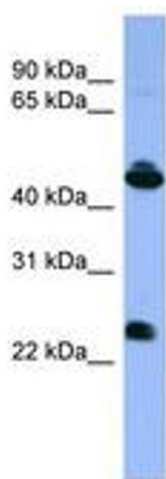


Image 1.