



[Go to Product page](#)

Datasheet for ABIN6746668
anti-Keratin 3 antibody (C-Term)

1 Image

Overview

Quantity:	100 µL
Target:	Keratin 3 (KRT3)
Binding Specificity:	C-Term
Reactivity:	Human, Monkey
Host:	Rabbit
Clonality:	Polyclonal
Conjugate:	This Keratin 3 antibody is un-conjugated
Application:	Western Blotting (WB)

Product Details

Immunogen:	Synthetic peptide from C-Terminus of human KRT3 (P12035, NP_476429). Percent identity by BLAST analysis: Human, Gorilla, Gibbon, Monkey (100%). Type of Immunogen: Synthetic peptide
Specificity:	Human KRT3 / Cytokeratin 3
Predicted Reactivity:	Percent identity by BLAST analysis:
Purification:	Immunoaffinity purified

Target Details

Target:	Keratin 3 (KRT3)
Alternative Name:	KRT3 / CK3 / Cytokeratin 3 (KRT3 Products)

Target Details

Background: Name/Gene ID: KRT3

Synonyms: KRT3

Gene ID: 3850

NCBI Accession: [NP_476429](#)

UniProt: [Q01546](#)

Application Details

Application Notes: Approved: WB (0.2 - 1 µg/mL)

Usage: Western Blot: Suggested dilution at 1 µg/mL in 5 % skim milk / PBS buffer, and HRP conjugated anti-Rabbit IgG should be diluted in 1: 50,000 - 100,000 as secondary antibody.

Comment: Target Species of Antibody: Human

Restrictions: For Research Use only

Handling

Format: Lyophilized

Reconstitution: Distilled water

Concentration: Lot specific

Buffer: Lyophilized from PBS with 2 % sucrose

Handling Advice: Avoid repeat freeze-thaw cycles.

Storage: 4 °C, -20 °C

Storage Comment: Long term: -20°C, the use of 50% glycerol is recommended if storing aliquots in -20°C for long term use (up to 1 year)
Short term (less than 1 week): 4°C. Avoid freeze-thaw cycles.

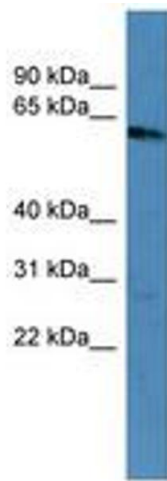


Image 1.