



Datasheet for ABIN6746680  
**anti-NETO1 antibody (AA 303-352)**



[Go to Product page](#)

1 Image

Overview

Quantity:	100 µL
Target:	NETO1
Binding Specificity:	AA 303-352
Reactivity:	Human, Mouse, Rat, Zebrafish (Danio rerio), Cow, Rabbit, Xenopus laevis, Monkey
Host:	Rabbit
Clonality:	Polyclonal
Conjugate:	This NETO1 antibody is un-conjugated
Application:	Western Blotting (WB)

Product Details

Immunogen:	Synthetic peptide located between aa303-352 of human NETO1 (Q8R4I7, NP_620416). Percent identity by BLAST analysis: Human, Chimpanzee, Gibbon, Monkey, Galago, Marmoset, Mouse, Rat, Rabbit, Xenopus, Zebrafish (100%), Panda, Dog, Horse, Opossum, Guinea pig (92%), Gorilla, Seabass (90%), Elephant, Bovine, Bat, Turkey, Chicken (85%).  Type of Immunogen: Synthetic peptide
Specificity:	Human NETO1
Predicted Reactivity:	Percent identity by BLAST analysis: Human, Mouse, Rat, Rabbit (100%) Dog, Horse, Guinea pig (92%) Zebrafish (90%) Bovine, Chicken (85%).
Purification:	Immunoaffinity purified

## Target Details

---

Target:	NETO1
Alternative Name:	NETO1 ( <a href="#">NETO1 Products</a> )
Background:	Name/Gene ID: NETO1  Synonyms: NETO1, BTCL1, BCTL1
Gene ID:	81832
NCBI Accession:	<a href="#">NP_620416</a>
UniProt:	<a href="#">Q8TDF5</a>
Pathways:	<a href="#">Regulation of long-term Neuronal Synaptic Plasticity</a>

## Application Details

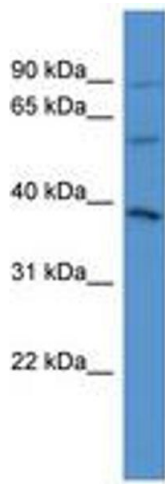
---

Application Notes:	Approved: WB (0.2 - 1 µg/mL)  Usage: Western Blot: Suggested dilution at 1 µg/mL in 5 % skim milk / PBS buffer, and HRP conjugated anti-Rabbit IgG should be diluted in 1: 50,000 - 100,000 as secondary antibody.
Comment:	Target Species of Antibody: Human
Restrictions:	For Research Use only

## Handling

---

Format:	Lyophilized
Reconstitution:	Distilled water
Concentration:	Lot specific
Buffer:	Lyophilized from PBS with 2 % sucrose
Handling Advice:	Avoid repeat freeze-thaw cycles.
Storage:	4 °C,-20 °C
Storage Comment:	Long term: -20°C, the use of 50% glycerol is recommended if storing aliquots in -20°C for long term use (up to 1 year)  Short term (less than 1 week): 4°C. Avoid freeze-thaw cycles.



**Image 1.**