

Datasheet for ABIN6746684
anti-GRK7 antibody (C-Term)[Go to Product page](#)

1 Image

Overview

Quantity:	100 µL
Target:	GRK7
Binding Specificity:	C-Term
Reactivity:	Human, Cow, Pig
Host:	Rabbit
Clonality:	Polyclonal
Conjugate:	This GRK7 antibody is un-conjugated
Application:	Western Blotting (WB)

Product Details

Immunogen:	Synthetic peptide from C-Terminus of human GRK7 (Q8WTQ7, NP_631948). Percent identity by BLAST analysis: Human (100%), Gibbon, Monkey, Marmoset (92%), Dog (91%), Panda, Guinea pig (90%), Galago, Pig (85%), Bovine (84%). Type of Immunogen: Synthetic peptide
Specificity:	Human GRK7
Predicted Reactivity:	Percent identity by BLAST analysis: Human (100%) Dog (91%) Guinea pig (90%) Pig (85%) Bovine (84%).
Purification:	Immunoaffinity purified

Target Details

Target:	GRK7
Alternative Name:	GRK7 / GPRK7 (GRK7 Products)
Background:	Name/Gene ID: GRK7 Subfamily: GPRK Family: Protein Kinase Synonyms: GRK7, GPRK7
Gene ID:	131890
NCBI Accession:	NP_631948
UniProt:	Q8WTQ7
Pathways:	Regulation of G-Protein Coupled Receptor Protein Signaling, Phototransduction

Application Details

Application Notes:	Approved: WB (0.2 - 1 µg/mL) Usage: Western Blot: Suggested dilution at 1 µg/mL in 5 % skim milk / PBS buffer, and HRP conjugated anti-Rabbit IgG should be diluted in 1: 50,000 - 100,000 as secondary antibody.
Comment:	Target Species of Antibody: Human
Restrictions:	For Research Use only

Handling

Format:	Lyophilized
Reconstitution:	Distilled water
Concentration:	Lot specific
Buffer:	Lyophilized from PBS with 2 % sucrose
Handling Advice:	Avoid repeat freeze-thaw cycles.
Storage:	4 °C, -20 °C
Storage Comment:	Long term: -20°C, the use of 50% glycerol is recommended if storing aliquots in -20°C for long term use (up to 1 year) Short term (less than 1 week): 4°C. Avoid freeze-thaw cycles.

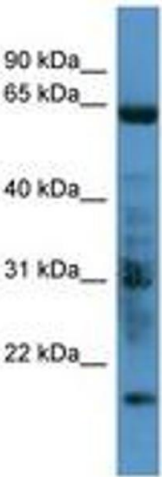


Image 1.