



[Go to Product page](#)

Datasheet for ABIN6746686  
**anti-OR2T5 antibody (C-Term)**

1 Image

Overview

Quantity:	100 µL
Target:	OR2T5
Binding Specificity:	C-Term
Reactivity:	Human, Horse, Monkey, Mouse, Pig, Bat, Rabbit, Cow, Rat, Dog, Guinea Pig
Host:	Rabbit
Clonality:	Polyclonal
Conjugate:	This OR2T5 antibody is un-conjugated
Application:	Western Blotting (WB)

Product Details

Immunogen:	Synthetic peptide from C-Terminus of human OR2T29 (Q8NH02, NP_001004694). Percent identity by BLAST analysis: Human, Gorilla, Gibbon, Monkey, Marmoset, Mouse, Rat, Panda, Dog, Bovine, Bat, Rabbit, Horse, Pig, Opossum, Guinea pig, Lizard (100%), Hamster, Elephant (92%).  Type of Immunogen: Synthetic peptide
Specificity:	Human OR2T29
Predicted Reactivity:	Percent identity by BLAST analysis:
Purification:	Immunoaffinity purified

## Target Details

---

Target:	OR2T5
Alternative Name:	OR2T5 ( <a href="#">OR2T5 Products</a> )
Background:	Name/Gene ID: OR2T5 Subfamily: Olfactory Family: GPCR  Synonyms: OR2T5, Olfactory receptor OR1-62, Olfactory receptor 2T5, OR1-62
Gene ID:	401993
NCBI Accession:	<a href="#">NP_001004694</a>
UniProt:	<a href="#">Q6IEZ7</a>

## Application Details

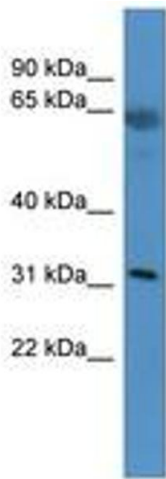
---

Application Notes:	Approved: WB (0.2 - 1 µg/mL)  Usage: Western Blot: Suggested dilution at 1 µg/mL in 5 % skim milk / PBS buffer, and HRP conjugated anti-Rabbit IgG should be diluted in 1: 50,000 - 100,000 as secondary antibody.
Comment:	Target Species of Antibody: Human
Restrictions:	For Research Use only

## Handling

---

Format:	Lyophilized
Reconstitution:	Distilled water
Concentration:	Lot specific
Buffer:	Lyophilized from PBS with 2 % sucrose
Handling Advice:	Avoid repeat freeze-thaw cycles.
Storage:	4 °C,-20 °C
Storage Comment:	Long term: -20°C, the use of 50% glycerol is recommended if storing aliquots in -20°C for long term use (up to 1 year) Short term (less than 1 week): 4°C. Avoid freeze-thaw cycles.



**Image 1.**