



[Go to Product page](#)

Datasheet for ABIN6746699

anti-MAGEA11 antibody (AA 151-200)

1 Image

Overview

Quantity:	100 µL
Target:	MAGEA11
Binding Specificity:	AA 151-200
Reactivity:	Human
Host:	Rabbit
Clonality:	Polyclonal
Conjugate:	This MAGEA11 antibody is un-conjugated
Application:	Western Blotting (WB)

Product Details

Immunogen:	Synthetic peptide located between aa151-200 of human MAGEA11 (P43364, NP_005357). Percent identity by BLAST analysis: Human (100%), Gorilla, Gibbon, Monkey (92%), Marmoset (85%), Galago (84%). Type of Immunogen: Synthetic peptide
Specificity:	Human MAGEA11
Predicted Reactivity:	Percent identity by BLAST analysis: Human (100%).
Purification:	Immunoaffinity purified

Target Details

Target:	MAGEA11
---------	---------

Target Details

Alternative Name:	MAGEA11 (MAGEA11 Products)
Background:	Name/Gene ID: MAGEA11 Synonyms: MAGEA11, Cancer/testis antigen 1.11, MAGE-11 antigen, MAGEA-11, Melanoma antigen family A, 11, Melanoma-associated antigen 11, MAGE11, CT1.11, MAGE-11
Gene ID:	4110
NCBI Accession:	NP_005357
UniProt:	P43364

Application Details

Application Notes:	Approved: WB (0.2 - 1 µg/mL) Usage: Western Blot: Suggested dilution at 1 µg/mL in 5 % skim milk / PBS buffer, and HRP conjugated anti-Rabbit IgG should be diluted in 1: 50,000 - 100,000 as secondary antibody.
Comment:	Target Species of Antibody: Human
Restrictions:	For Research Use only

Handling

Format:	Lyophilized
Reconstitution:	Distilled water
Concentration:	Lot specific
Buffer:	Lyophilized from PBS with 2 % sucrose
Handling Advice:	Avoid repeat freeze-thaw cycles.
Storage:	4 °C, -20 °C
Storage Comment:	Long term: -20°C, the use of 50% glycerol is recommended if storing aliquots in -20°C for long term use (up to 1 year) Short term (less than 1 week): 4°C. Avoid freeze-thaw cycles.

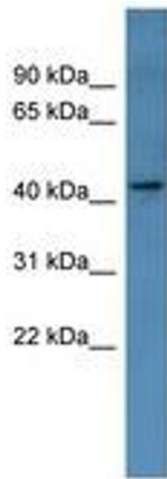


Image 1.